

Joan de burgo... Jo. Joandeburg...

I anno... Joandeburg... Joandeburg... Joandeburg...

Joandeburg... Joandeburg... Joandeburg...

Joandeburg...

Faded handwritten text, likely bleed-through from the reverse side of the page.

Egi
verdu. *[illegible]*

[Extremely dense and mostly illegible handwritten text, possibly a list or account.]

[illegible] Die mijn... *[illegible]*

Die mijn... *[illegible]*

Die mijn... *[illegible]*

Die mijn... *[illegible]*

Die mijn... *[illegible]*

Die mijn... *[illegible]*

Die mijn... *[illegible]*

Honoris Joannis...
Dms d'allyeu ser non

...secundum...
...de...
...et...

...ad...
...et...

...in...

...et...

...et...

Preterea vero ac si...
 Joandeburgor...
 alidammun...
 merqued...
 continuame...
 aquilla...

Duxus...
 de...

Anna...
 non...
 qu...
 de...
 ann...
 ill...
 ap...
 qu...
 qu...
 qu...
 qu...
 qu...
 qu...

quod...
 quod...

Handwritten text in a cursive script, likely a historical document or manuscript. The text is dense and spans most of the page, with some lines appearing to be crossed out or heavily scribbled over. The ink is dark and the paper shows signs of age and wear.

Die ...
Handwritten text, possibly a date or a specific entry, written in the same cursive script as the main body of text.

Die ...
Handwritten text, continuing the entries from the previous block. The script is consistent with the rest of the document.

648

Handwritten text at the top of the page, possibly a title or header, including a cross symbol.

Main body of handwritten text, consisting of several lines of cursive script.

Handwritten text at the bottom of the page, possibly a signature or a closing line.

[Extremely dense and illegible handwritten text, likely a list or account, covering the top half of the page.]

*Die mich vom angung und gesuch
des vns dancket gnu*

*Die mich vom angung und gesuch
des vns dancket gnu*

Handwritten text at the top of the page, possibly a title or header.

Main body of dense handwritten text, likely a letter or a manuscript page.

A line of handwritten text, possibly a signature or a closing phrase.

Handwritten text, possibly a date or a reference.

Handwritten text, possibly a date or a reference.

Handwritten text in a cursive script, likely a historical document or letter. The text is dense and spans most of the page, with some lines appearing to be crossed out or heavily scribbled over. The ink is dark and the paper shows signs of age and wear.

Handwritten text at the bottom of the page, possibly a signature or a concluding line of the document.

[The page contains approximately 15 lines of dense, cursive handwriting in an old script, likely Latin or Italian. The ink is dark and the script is highly stylized and difficult to decipher. The text is written across the upper two-thirds of the page.]

[The page contains approximately 20 lines of dense, handwritten text in a cursive script. The ink is dark and the handwriting is highly stylized and somewhat illegible due to the cursive nature and some fading. The text appears to be a continuous passage, possibly a letter or a manuscript entry.]

[Faint, mostly illegible handwritten text in a cursive script, likely a historical document or manuscript.]

[Faint handwritten text, possibly a list or index, with some legible words like 'Dien' and 'Hout' visible.]

[Extremely dense and mostly illegible handwritten text in a cursive script, likely a historical document or manuscript.]

Wij die wij van de feiten in de...
grijp

Die wij van de feiten in de...
selv...
die wij van de feiten in de...
am...
die wij van de feiten in de...
to dit...
g...
727
728
729

[Faint, mostly illegible handwritten text in a cursive script, possibly a historical document or letter.]

Lozme mulla ~~to transfer~~

[The following text is extremely faint and illegible due to fading and bleed-through from the reverse side of the page.]

[The text in this block is extremely faint and illegible due to fading and bleed-through from the reverse side of the page. It appears to be a dense block of handwritten text.]

[Faint, illegible handwritten text in a cursive script, likely a historical document or letter.]

[Faint, illegible handwriting at the top of the page]

[A large block of dense, dark, and mostly illegible handwriting in the upper middle section]

[A line of handwriting, possibly a signature or a specific heading]

[A line of handwriting, possibly a date or a reference]

[A large block of dense, dark, and mostly illegible handwriting in the lower middle section]

Handwritten text at the top of the page, possibly a title or header, including the word "Baptismus".

A large, dense block of handwritten text, likely a main body of a document or a list of entries, written in a cursive script.

Handwritten text line, possibly a section header or a specific entry, starting with "Jamburgos".

Handwritten initials or a small mark on the left side of the page.

Handwritten text line, possibly a date or a specific entry, starting with "die".

A list of handwritten entries, each preceded by a small mark or number on the left side, possibly a calendar or a list of events.

Handwritten text at the top of the page, including the word "L'assemblée" and other illegible cursive script.

Main body of dense handwritten text in cursive script, covering the upper half of the page.

A line of handwritten text, possibly a section header or a specific entry, located in the middle of the page.

Another line of handwritten text, continuing the narrative or list.

Large block of dense handwritten text at the bottom of the page, including a dark ink blot or smudge.

[Faint, mostly illegible handwritten text in a cursive script, possibly a list or account.]

[A line of handwritten text, possibly a date or a specific entry.]

[A large block of handwritten text, appearing to be a detailed account or list of items, written in a cursive script.]

[Faint, mostly illegible handwritten text in a cursive script, possibly a historical document or letter.]

Die 1^{ma} Junii 1574
Mortoni
[Illegible]

[Faded handwritten text, likely bleed-through from the reverse side of the page. The script is dense and difficult to decipher.]

[Marginal notes in the left margin, consisting of several lines of handwritten text.]

[Main body of handwritten text, continuing from the top of the page. The text is very faint and largely illegible.]

[Marginal notes at the bottom left, including the phrase "vide in m m" and "in a m m".]

+

[Faded handwritten text, likely bleed-through from the reverse side of the page. The text is mostly illegible due to fading and ink bleed-through.]

673

[Faded handwritten text, likely bleed-through from the reverse side of the page. The text is mostly illegible due to fading and ink bleed-through.]

[The page contains approximately 25 lines of handwritten text in a cursive script, which is largely illegible due to fading and bleed-through from the reverse side. The text appears to be a continuous paragraph or a list of entries.]

1794

1795

Handwritten text at the top of the page, possibly a title or header, including a cross symbol.

Main body of dense handwritten text, likely a letter or a manuscript page, written in a cursive script.

A distinct line of handwritten text, possibly a signature or a closing phrase.

Lower section of handwritten text, appearing less dense than the main body.

~~Handwritten text, mostly illegible due to fading and bleed-through.~~

die mijn eydegenoten die gelyc
vrijheit en vryheit en vryheit
en vryheit en vryheit en vryheit

die mijn eydegenoten die gelyc
vrijheit en vryheit en vryheit

die mijn eydegenoten die gelyc
vrijheit en vryheit en vryheit

die mijn eydegenoten die gelyc
vrijheit en vryheit en vryheit

die mijn eydegenoten die gelyc
vrijheit en vryheit en vryheit

die mijn eydegenoten die gelyc
vrijheit en vryheit en vryheit

Handwritten text at the top of the page, possibly a title or header.

Main body of handwritten text, consisting of several lines of cursive script.

Second main section of handwritten text, continuing the cursive script.

Final section of handwritten text at the bottom of the page.

[Faint, mostly illegible handwritten text in a cursive script, likely Dutch or German.]

[A line of handwritten text, possibly a section header or a specific address, written in a cursive script.]

[Marginal handwritten notes or initials on the left side of the page.]

[A block of handwritten text, appearing to be a letter or a formal document, written in a cursive script.]

[Faint handwritten text at the bottom of the page, possibly a signature or a closing.]

[Faint, mostly illegible handwritten text in a cursive script, possibly German or French.]

[Faint, mostly illegible handwritten text, appearing as a separate section or entry.]

[Faint, illegible handwritten text in a cursive script, likely a historical document or manuscript.]

Handwritten text in a cursive script, likely Dutch or German, covering most of the page. The text is dense and difficult to decipher due to the cursive style and some fading. It appears to be a letter or a formal document.

Wm

[Faint, mostly illegible handwritten text in a cursive script, possibly a historical document or manuscript.]

Handwritten text in a cursive script, likely a letter or a page from a manuscript. The text is dense and difficult to decipher due to the style and fading. It appears to be a personal communication, possibly a letter of introduction or a request. The text is written in a dark ink on aged, slightly stained paper. The script is highly cursive, with many loops and flourishes. The overall appearance is that of an old, well-used document.

Handwritten text in a cursive script, likely a letter or document. The text is dense and difficult to decipher due to the style and fading. Some legible words include "neque", "vini", "obliqua", and "pro".

Handwritten text, possibly a signature or a specific heading, appearing as a distinct line of script.

Handwritten text, possibly a signature or a specific heading, appearing as a distinct line of script.

Handwritten text, possibly a signature or a specific heading, appearing as a distinct line of script.

[Faint, mostly illegible handwritten text in a cursive script, likely a historical document or letter.]

689

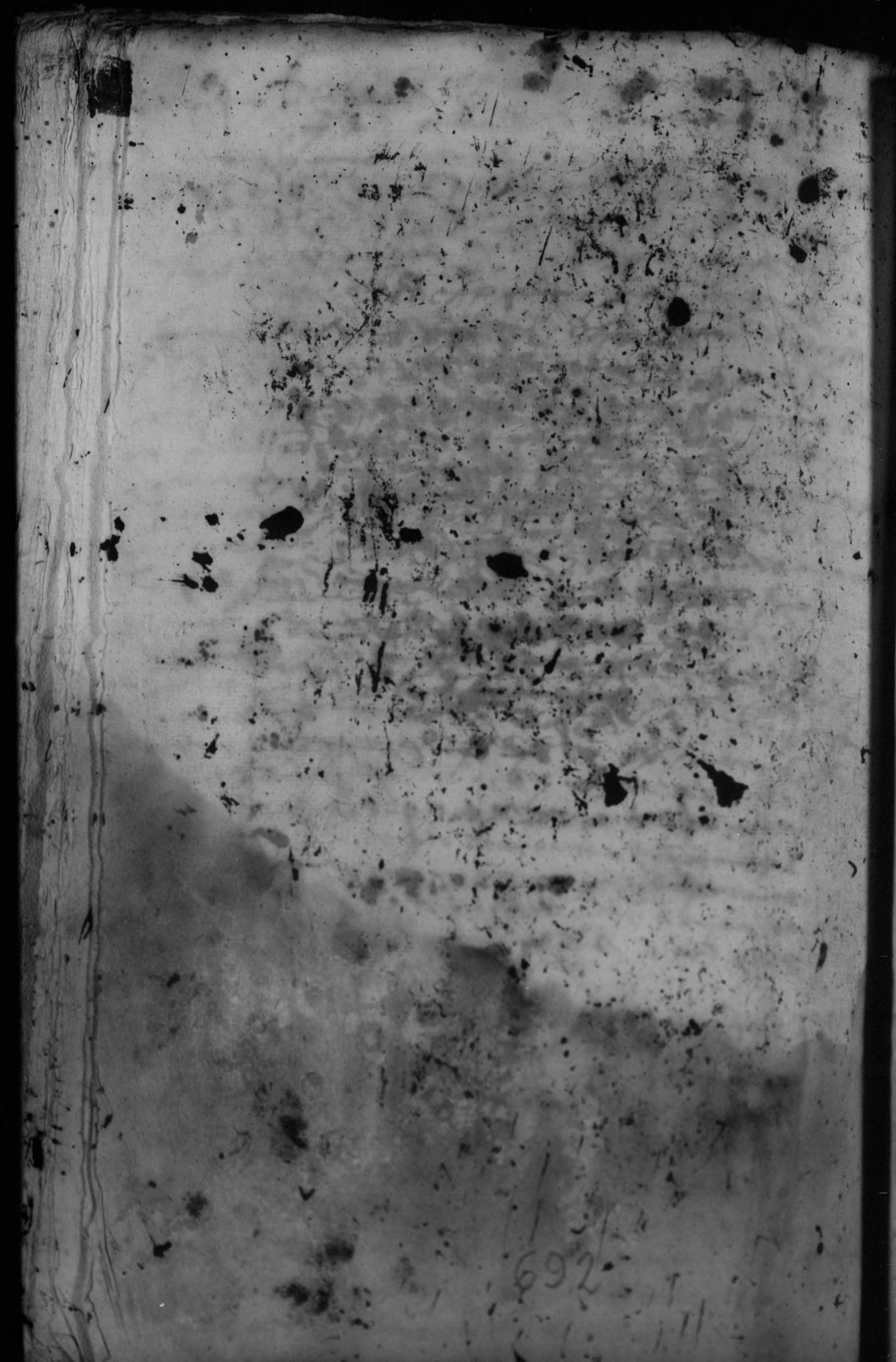
[Handwritten text starting with 'De obitu...' and continuing with several lines of cursive script.]

[The page contains dense, handwritten text in a cursive script, likely from the 17th or 18th century. The text is written in dark ink on aged, slightly yellowed paper. The handwriting is highly stylized and difficult to decipher. The text is organized into several paragraphs, with some lines appearing to be headings or section markers. The overall appearance is that of a historical manuscript or letter.]

Handwritten text on the left edge of the page, including fragments like "Tm", "ob", and "m".

Main body of the page containing extremely faint, illegible handwritten text, possibly in Arabic script, with several dark ink blotches and stains.

A large, stylized handwritten flourish or symbol on the right edge of the page.



[Faint, mostly illegible handwritten text in a cursive script, possibly a list or account.]

[A distinct line of handwritten text, possibly a signature or a specific entry.]

[A second section of handwritten text, appearing as a list or account with some legible words like 'die' and 'sign' on the left margin.]

[Faint, illegible handwritten text in a cursive script, likely a historical document or letter.]

[A distinct line of handwritten text, possibly a signature or a specific heading.]

[A block of faint, illegible handwritten text, continuing the document's content.]

Handwritten text in a cursive script, likely a historical document or manuscript. The text is dense and spans most of the page, with some lines appearing to be crossed out or heavily scribbled over. The script is dark and somewhat faded, making it difficult to decipher. The page number 698 is visible near the bottom center.

Wij hebben de ... van ...

... van ...

... van ...

... van ...

... van ...

... van ...

... van ...

... van ...

Wij
zijn

Handwritten text in a cursive script, likely a historical document or letter. The text is dense and spans most of the page, though it is significantly faded and difficult to decipher. Some legible fragments include "in...", "die...", and "deber...", suggesting a formal or administrative context.

Additional handwritten text at the bottom of the page, appearing as a separate section or signature block. It is also in cursive and largely illegible due to fading.

[Extremely dense and illegible handwritten text in a cursive script, likely a historical document or manuscript.]

[A single line of handwritten text, possibly a signature or a specific heading, located below the main body of text.]

[The page contains approximately 25 lines of dense, handwritten text in a cursive script. The ink is dark and the handwriting is highly stylized and somewhat illegible due to the cursive nature and some fading. The text appears to be a continuous block of writing, possibly a letter or a manuscript page.]

[Faint, mostly illegible handwritten text in a cursive script, possibly a list or account.]

[Faint, mostly illegible handwritten text, appearing as a separate section or entry.]

[Faint handwritten text at the bottom of the page, possibly a signature or date.]

[The page contains approximately 25 lines of dense, handwritten text in a cursive script. The ink is dark and the handwriting is highly stylized and somewhat illegible due to the cursive nature and some fading. The text appears to be a continuous passage, possibly a letter or a journal entry. Some words are more clearly visible than others, but the overall content is difficult to decipher. The page shows signs of age, with some staining and wear along the edges.]

[Extremely dense and illegible handwritten text in a cursive script, covering the upper two-thirds of the page.]

405

[Faded handwritten text at the bottom of the page, including a signature and possibly a date or reference.]

[Extremely dense and mostly illegible handwritten text in a cursive script, covering the top half of the page.]

[A line of handwritten text, possibly a title or section header, in a cursive script.]

[A line of handwritten text, possibly a signature or a specific entry, in a cursive script.]

[Small handwritten text or notes on the left side of the page.]

406

[A line of handwritten text, possibly a signature or a specific entry, in a cursive script.]

[A block of handwritten text, possibly a list or a series of entries, in a cursive script.]

[A block of handwritten text at the bottom of the page, possibly a list or a series of entries, in a cursive script.]

†
L. ...

Handwritten text in a dense, cursive script, likely a historical document or letter. The text is written in dark ink on aged, slightly stained paper. It consists of approximately 15 lines of text, with some lines being significantly more dense than others. The script is highly stylized and difficult to decipher without a key.

Handwritten text in a cursive script, appearing to be a separate section or a continuation of the text above. It is written in dark ink on aged paper. The text is less dense than the previous section and appears to be a shorter passage or a specific note.

707

[Faint, mostly illegible handwritten text in a cursive script, possibly Latin or German. Some words like 'Blangue' and '104' are partially visible.]

[A block of handwritten text, likely a signature or a specific section of a letter. The script is dense and cursive.]

[A small handwritten mark or word, possibly 'Wid' or 'Wid' written vertically.]

708

[Faint, mostly illegible handwritten text in a cursive script, possibly a historical document or letter.]

[A second section of handwritten text, appearing as a list or series of entries, with some legible words like 'Fie' and 'omni' visible.]

[Small handwritten notes or marginalia in the bottom left corner.]

Die Vmijns xviij Septembris
ano 1582 vniuersi p[ro]p[ri]a
Blanquer p[ro]p[ri]a

¶ De la cord de vos ma[is] In sep[te]m[us] a lra
mora non Intra de la Vila de alay
austromia del p[ro]p[ri]a en p[ro]p[ri]a p[ro]p[ri]a
de p[ro]p[ri]a p[ro]p[ri]a de la p[ro]p[ri]a de
alay es par Intra In q[ui]s d[omi]ni mori
est lo qual p[ro]p[ri]a de vos cord es
par p[ro]p[ri]a al p[ro]p[ri]a en Intra p[ro]p[ri]a
llanquay. Veru[m] d[omi]ni Vila non a p[ro]p[ri]a
et v[er]u[m] mori p[ro]p[ri]a p[ro]p[ri]a ab lo
qual h[ab]et Intra q[ui]s d[omi]ni d[omi]ni
Intra p[ro]p[ri]a p[ro]p[ri]a d[omi]ni a lra regny
reus In p[ro]p[ri]a d[omi]ni d[omi]ni d[omi]ni
lodin mori p[ro]p[ri]a p[ro]p[ri]a Intra
restant lo qual Intra p[ro]p[ri]a
de vni d[omi]ni p[ro]p[ri]a p[ro]p[ri]a Intra
mandat Intra p[ro]p[ri]a lo qual
v[er]u[m] parlar es mille es mille
rez Intra p[ro]p[ri]a p[ro]p[ri]a Intra
causa p[ro]p[ri]a et signat p[ro]p[ri]a
et signat

de maner de ...
manjer ...
effere ...
enles del peffet ...
del doble ...
mag ...
rat ...
fer le dego ...

Sobre los que capvots requir ...
quis effere ...
Et med ...

In sup requir ...
rebu ...

Sup ...
que ...
bin ...
Canja ...
Oje ...
de la ...

Et ...
Ledes ...
de ...
de ...
de ...
de ...

Sup ...
Tuy ...
de ...
de ...
de ...

[Faint, mostly illegible handwritten text in a cursive script, possibly a historical document or letter.]

[A second section of handwritten text, appearing as a list or series of entries, with some legible words like 'Fie' and 'de' visible.]

[Small handwritten notes or marginalia in the bottom left corner.]

Handwritten text at the top of the page, possibly a header or title, including the word "capitulo".

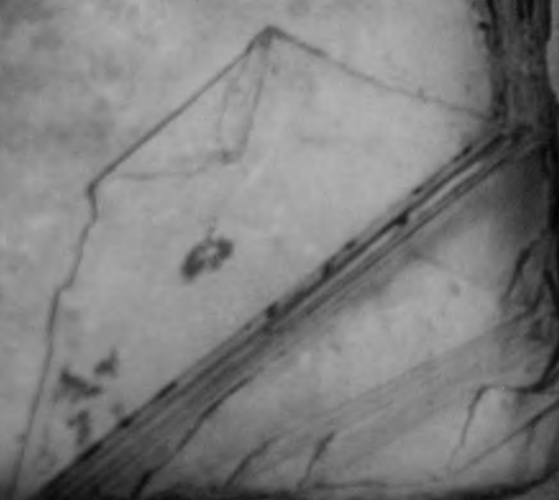
Main body of handwritten text, consisting of several lines of dense script.

410

Lower section of handwritten text, appearing to be a continuation of the main body or a separate entry.

[Illegible handwritten text, likely a list or account]

[Illegible handwritten text, possibly a signature or date]



Handwritten text at the top of the page, possibly a title or header, including a large initial 'N'.

Main body of dense handwritten text in a cursive script, covering the upper and middle portions of the page.

Lower section of handwritten text, appearing less dense than the upper section, possibly a concluding paragraph or signature area.

412

Handwritten text at the top of the page, possibly a header or title, written in a cursive script.

Main body of dense handwritten text, appearing to be a letter or a detailed account, written in a cursive script. The text is heavily obscured by dark ink smudges and bleed-through from the reverse side of the page.

444

Handwritten text at the bottom of the page, continuing the narrative or providing a conclusion, written in a cursive script.

Handwritten text at the top of the page, possibly a title or header, written in a cursive script.

Main body of dense handwritten text in a cursive script, covering the upper and middle portions of the page. The text is written in dark ink on aged paper.

Handwritten text at the bottom of the page, appearing as a separate section or entry. It includes several lines of cursive script.

[Faint, illegible handwritten text, likely bleed-through from the reverse side of the page.]

[Faint, illegible handwritten text, likely bleed-through from the reverse side of the page.]

[Illegible handwritten text in a cursive script, likely from a 17th or 18th-century manuscript.]

Handwritten text in a cursive script, likely a letter or document. The text is dense and difficult to decipher due to the style and fading. The visible words include "Ich", "mein", "die", and "schon".

[Faint, mostly illegible handwritten text in a cursive script, possibly a letter or a page from a manuscript.]

[A block of handwritten text, appearing to be a signature or a specific section of a document.]

Handwritten text at the top of the page, possibly a title or header, written in a cursive script.

Main body of handwritten text, consisting of approximately 15 lines of dense cursive script.

Second section of handwritten text, appearing as a separate paragraph or entry, also in cursive script.

Handwritten text at the top of the page, possibly a title or header, including the word "Sanctus".

Main body of handwritten text in a cursive script, consisting of several lines of dense writing.

Handwritten text in a cursive script, likely a historical document or letter. The text is dense and spans most of the page, though it becomes increasingly illegible due to fading and bleed-through from the reverse side. Some words are partially recognizable, such as "libro" and "obli".

Handwritten text in a cursive script, likely a historical document or manuscript. The text is dense and spans most of the page, with some lines appearing to be crossed out or heavily faded. The script is characteristic of the early modern period.

Handwritten text at the bottom of the page, possibly a signature or a concluding phrase.

[Faint, mostly illegible handwritten text in a cursive script, likely a historical document or manuscript.]

[Vertical handwritten notes or a list on the right margin.]

[Faint handwritten text visible on the left edge of the page.]

[Faint, mostly illegible handwritten text at the top of the page, possibly a header or introductory section.]

[A block of handwritten text, appearing to be a list or a series of entries, though the individual words are difficult to decipher.]

[Another block of handwritten text, continuing the list or entries.]

728

[A final block of handwritten text at the bottom of the page, possibly a conclusion or a separate note.]

to Janne yello & ...

[Faded handwritten text, likely bleed-through from the reverse side of the page]

De bevoeren vanden die

Die mijn ... onbinnen and ...
Guzes ...
Caus ...
...
...

Die mijn ...
...
...

Handwritten text at the top of the page, possibly a header or title, written in a cursive script.

Main body of handwritten text in cursive script, consisting of several lines of dense writing.

A distinct line of handwritten text, possibly a section header or a specific entry, written in cursive.

Lower section of handwritten text, appearing as a list or series of entries, written in cursive.

[Extremely dense and mostly illegible handwritten text in a cursive script, covering the upper two-thirds of the page.]

[A section of handwritten text, appearing less dense than the upper portion, with some words and phrases more clearly visible.]

Handwritten text on the left edge of the page, partially obscured by the binding.

Main body of handwritten text, heavily faded and obscured by a large, irregular tear in the lower half of the page. The text is written in a cursive script.

[Faint, mostly illegible handwriting covering the upper two-thirds of the page, possibly representing a list or a series of entries.]

Testes hinc et inde in Racl nodol xila
Hrig et muel / mansoban / mansobille
seday nobos

Offertoria vendit ad omnes / septuaginta annos
de la p... / mansobille / seday / nobos
boni n... / mansobille / mansobille / mansobille
vendit / mansobille / mansobille / mansobille
de la p... / mansobille / mansobille / mansobille
mansobille / mansobille / mansobille / mansobille
mansobille / mansobille / mansobille / mansobille
mansobille / mansobille / mansobille / mansobille

[Handwritten signature or name, possibly 'Luis de...']

Handwritten text at the top of the page, possibly a title or header, including the word "Gloria".

Main body of dense handwritten text in a cursive script, likely a liturgical or musical manuscript.

7/10 11

Handwritten text at the bottom of the page, possibly a signature or a concluding phrase.

[Illegible handwritten text in a cursive script, likely from a 17th or 18th-century manuscript. The text is densely packed and spans most of the page's width.]

[A few lines of handwritten text, possibly a signature or a specific note, located below the main body of text.]

Handwritten text in a cursive script, possibly Dutch or German, covering the upper and middle portions of the page. The text is dense and difficult to decipher due to the cursive style and some fading. It appears to be a letter or a formal document.

Handwritten text in a cursive script, possibly Dutch or German, covering the lower portion of the page. This section is also dense and difficult to decipher.

Handwritten text in a cursive script, likely a letter or document. The text is dense and spans most of the page. It begins with a large initial 'S' and contains several lines of text, including what appears to be a signature or name at the top right. The ink is dark and the paper shows signs of age and wear.

Handwritten text in a cursive script, likely a letter or document. This section is less dense than the one above and appears to be a separate line of text or a signature. It is located in the lower half of the page.

[Faint, mostly illegible handwritten text in a cursive script, likely a historical document or letter.]

[Faint handwritten text, possibly a signature or a specific section of the document.]

7

...rijkelinge ... van ...

... die mijn ...

... de ...

... die mijn ...

f 19 my ...

150

f 20 ...

Handwritten text at the top of the page, including the word "Gott" and other illegible script.

Main body of handwritten text, which is extremely faded and mostly illegible due to the age and damage of the manuscript.

Handwritten text in a cursive script, likely a historical document or manuscript. The text is densely packed and spans the entire page, with some lines appearing to be crossed out or heavily faded. The script is characteristic of the late 15th or early 16th century. The text is written in a dark ink on aged, slightly yellowed paper. The handwriting is very fluid and connected, making it difficult to decipher without specialized knowledge of the script. There are some larger, more prominent words or phrases that stand out, but the overall content is illegible due to the cursive style and fading. The text appears to be organized into several paragraphs, with some lines starting with capital letters. The overall appearance is that of a well-used, possibly legal or administrative, document from the early modern period.

Handwritten text in a cursive script, likely a medieval manuscript. The text is dense and covers most of the page, with some lines appearing to be crossed out or heavily scribbled over. The ink is dark, and the paper shows signs of age and wear.

Indem...

Distrib...

Handwritten text in a cursive script, likely a medieval manuscript. The text is dense and covers most of the page, with some lines appearing to be crossed out or heavily scribbled over. The ink is dark, and the paper shows signs of age and wear.

Handwritten text in a cursive script, likely a historical document or letter. The text is dense and covers most of the page. It begins with a large initial 'L' and contains several lines of text, some of which are crossed out or heavily scribbled over. The ink is dark and the paper shows signs of age and wear.

Handwritten text in a cursive script, continuing from the top section. This section is significantly obscured by a large, dark, irregular stain or smudge that covers the middle portion of the page. The text is mostly illegible due to this damage. The bottom part of the page shows some more legible cursive writing, including what appears to be a signature or a closing phrase.

Handwritten text at the top of the page, possibly a title or header, written in a cursive script.

Main body of handwritten text, consisting of several lines of cursive script. The text is somewhat faded and difficult to decipher.

Handwritten text at the top of the page, possibly a title or header, including the word "Sapientia".

Main body of handwritten text, consisting of approximately 20 lines of dense, cursive script.

459

Handwritten text at the bottom of the page, including the words "Debus" and "revelis".

Small handwritten notes or marginalia on the left side of the page.

[Faint, illegible handwriting at the top of the page]

[A large block of dense, cursive handwriting, mostly illegible due to fading and bleed-through]

[A section of handwriting, possibly a signature or a specific note, with some legible words like 'am' and 'die']

[Faint handwriting at the bottom of the page, including a large number '60' and other illegible characters]

Handwritten text at the top of the page, possibly a title or header, written in a cursive script.

Main body of handwritten text, consisting of several lines of dense cursive script, likely a letter or a manuscript page.

Lower section of handwritten text, continuing the cursive script, possibly a signature or a closing section.

... de ...

... de ...

... de ...

genua 7 obliqua, sumpta p[er] p[er] p[er]
C[on]mune g[e]n[er]is p[ro]p[ri]et[er] m[er]it[us]

7 p[ro]p[ri]et[er] ut in die

die m[er]it[us] p[ro]p[ri]et[er] ut in die
L[ib]er p[ro]p[ri]et[er] ut in die
L[ib]er p[ro]p[ri]et[er] ut in die

die m[er]it[us] p[ro]p[ri]et[er] ut in die
L[ib]er p[ro]p[ri]et[er] ut in die

die m[er]it[us] p[ro]p[ri]et[er] ut in die
L[ib]er p[ro]p[ri]et[er] ut in die
die m[er]it[us] p[ro]p[ri]et[er] ut in die
L[ib]er p[ro]p[ri]et[er] ut in die
die m[er]it[us] p[ro]p[ri]et[er] ut in die
L[ib]er p[ro]p[ri]et[er] ut in die

Handwritten text at the top of the page, including the word "Gloria" and "in excelsis deo".

Handwritten text in the upper middle section of the page.

Handwritten text in the middle section of the page.

Handwritten text in the lower middle section of the page.

Handwritten text in a cursive script, likely a historical document or manuscript. The text is dense and spans most of the page, with some lines appearing to be crossed out or heavily faded. The script is characteristic of the late 16th or early 17th century.

Additional handwritten text at the bottom of the page, continuing the cursive script. This section appears less dense than the upper portion, with some lines being more legible than others. The text seems to conclude or provide a summary of the preceding content.

Handwritten text in a cursive script, likely a historical document or letter. The text is dense and covers most of the page. Some legible words include "la viner de", "sunt amoring", "dum", "vener", "sunt", "dum", "vener", "sunt", "dum", "vener", "sunt".

Handwritten notes or signatures on the left margin, including "pign", "pign", "pign".

6 470

Handwritten text in a cursive script, continuing from the top section. The text is dense and covers the bottom half of the page. Some legible words include "die", "pign", "vener", "sunt", "dum", "vener", "sunt", "dum", "vener", "sunt".

Handwritten text in a cursive script, likely a historical document or letter. The text is dense and spans most of the page. A small cross symbol is visible at the top right. The ink is dark and the paper shows signs of age and wear.

Handwritten text, possibly a signature or a specific section of the document, located in the lower middle part of the page.

Handwritten text, possibly a signature or a specific section of the document, located in the lower middle part of the page.

Handwritten text, possibly a signature or a specific section of the document, located in the lower middle part of the page.

Handwritten text in a cursive script, likely a historical document or letter. The text is dense and spans most of the page, with some lines appearing to be crossed out or heavily faded. The ink is dark, and the paper shows signs of age and wear.

Handwritten text in a cursive script, continuing from the previous block. The text is dense and spans most of the page, with some lines appearing to be crossed out or heavily faded. The ink is dark, and the paper shows signs of age and wear.

Handwritten text in a cursive script, continuing from the previous block. The text is dense and spans most of the page, with some lines appearing to be crossed out or heavily faded. The ink is dark, and the paper shows signs of age and wear.

22

Handwritten text in a cursive script, likely a historical document or letter. The text is dense and spans most of the page.

72

Handwritten signature or name, possibly "Procurator".

[The page contains approximately 25 lines of dense, handwritten text in a cursive script, likely a historical document or manuscript. The ink is dark and the paper shows signs of age and wear.]

[The page contains dense, handwritten text in a cursive script, likely a historical document or manuscript. The text is written in dark ink on aged, slightly yellowed paper. The handwriting is fluid and characteristic of the early modern period. The text is arranged in approximately 25 horizontal lines, filling most of the page's width. Some words are more legible than others due to the cursive style and fading. The overall appearance is that of a well-used, historical record.]

[A small, handwritten note or signature, possibly a date or a name, written in the left margin of the page.]

Handwritten text in a cursive script, likely a letter or a page from a manuscript. The text is written in dark ink on aged, slightly yellowed paper. The handwriting is dense and fills most of the page. The text is written in a cursive script, likely a letter or a page from a manuscript. The text is written in dark ink on aged, slightly yellowed paper. The handwriting is dense and fills most of the page.

Handwritten text in a cursive script, likely a letter or a page from a manuscript. The text is written in dark ink on aged, slightly yellowed paper. The handwriting is dense and fills most of the page. The text is written in a cursive script, likely a letter or a page from a manuscript. The text is written in dark ink on aged, slightly yellowed paper. The handwriting is dense and fills most of the page.

[The page contains approximately 25 lines of dense, handwritten text in a cursive script, likely a historical document or manuscript. The text is mostly illegible due to fading and the angle of the page.]

[The page contains approximately 25 lines of handwritten text in a cursive script, which is largely illegible due to fading and blurring. The text appears to be a continuous paragraph or a list of entries.]

Handwritten text in a cursive script, likely a letter or document. The text is dense and difficult to decipher due to the style and fading. It appears to be written in a historical or archaic form of a European language.

Handwritten text in a cursive script, continuing from the previous section. The text is dense and difficult to decipher due to the style and fading. It appears to be written in a historical or archaic form of a European language.

to Januarius 1784
[Illegible handwritten text]

So debet utriusque die

signi festo vna die in ianuario
anno 1784

procurator diebus domini decembris anno 1784

die in ianuario 1784
[Illegible handwritten text]

Handwritten text at the top of the page, possibly a title or header, including a cross symbol.

Main body of dense handwritten text in a cursive script, covering the upper and middle portions of the page.

A section of handwritten text, possibly a signature or a specific heading, located in the lower middle part of the page.

The bottom section of the page, containing more handwritten text, which appears lighter and less dense than the upper sections.

[Faint, mostly illegible handwritten text in a cursive script, possibly a list or account.]

Die mijn en mijn and etc. van
Die mijn en mijn and etc. van
Die mijn en mijn and etc. van

Handwritten text in a cursive script, likely a historical document or letter. The text is dense and spans most of the page. It appears to be written in a historical form of a European language, possibly Latin or Italian. The script is highly stylized and difficult to decipher without specialized knowledge. The text is arranged in approximately 15-20 lines, with some lines being significantly longer than others. There are some larger, more prominent characters or symbols interspersed within the text, possibly serving as section markers or initials. The overall appearance is that of a well-used, aged manuscript page.

Faint, illegible handwritten text located at the bottom of the page, possibly a signature or a date. The characters are very light and difficult to read against the background of the paper.

Handwritten text in a cursive script, likely a historical document or manuscript. The text is dense and covers most of the page. A small cross symbol is visible at the top center.

Handwritten text in a cursive script, continuing from the upper section. The text is less dense and appears to be a continuation of the document.

[Faint, mostly illegible handwritten text in a cursive script, possibly Dutch or German. The text is written across several lines and is partially obscured by a vertical crease or fold in the paper.]

Die mijn van Jan in de 1600 de
van de 1600 de 1600 de 1600 de

Die mijn van Jan in de 1600 de
190
die mijn van Jan in de 1600 de
van de 1600 de 1600 de 1600 de
die mijn van Jan in de 1600 de
van de 1600 de 1600 de 1600 de
die mijn van Jan in de 1600 de
van de 1600 de 1600 de 1600 de

Q uero mae. Redam. & manu
Eg. & d. an. & en. & s. & p. & a. & c.
Hic. & p. & d. & c. & v. & s. & c. & d.
an. & d. & l. & v. & m. / -

H

An. & d. & l. & v. & m. / -

812

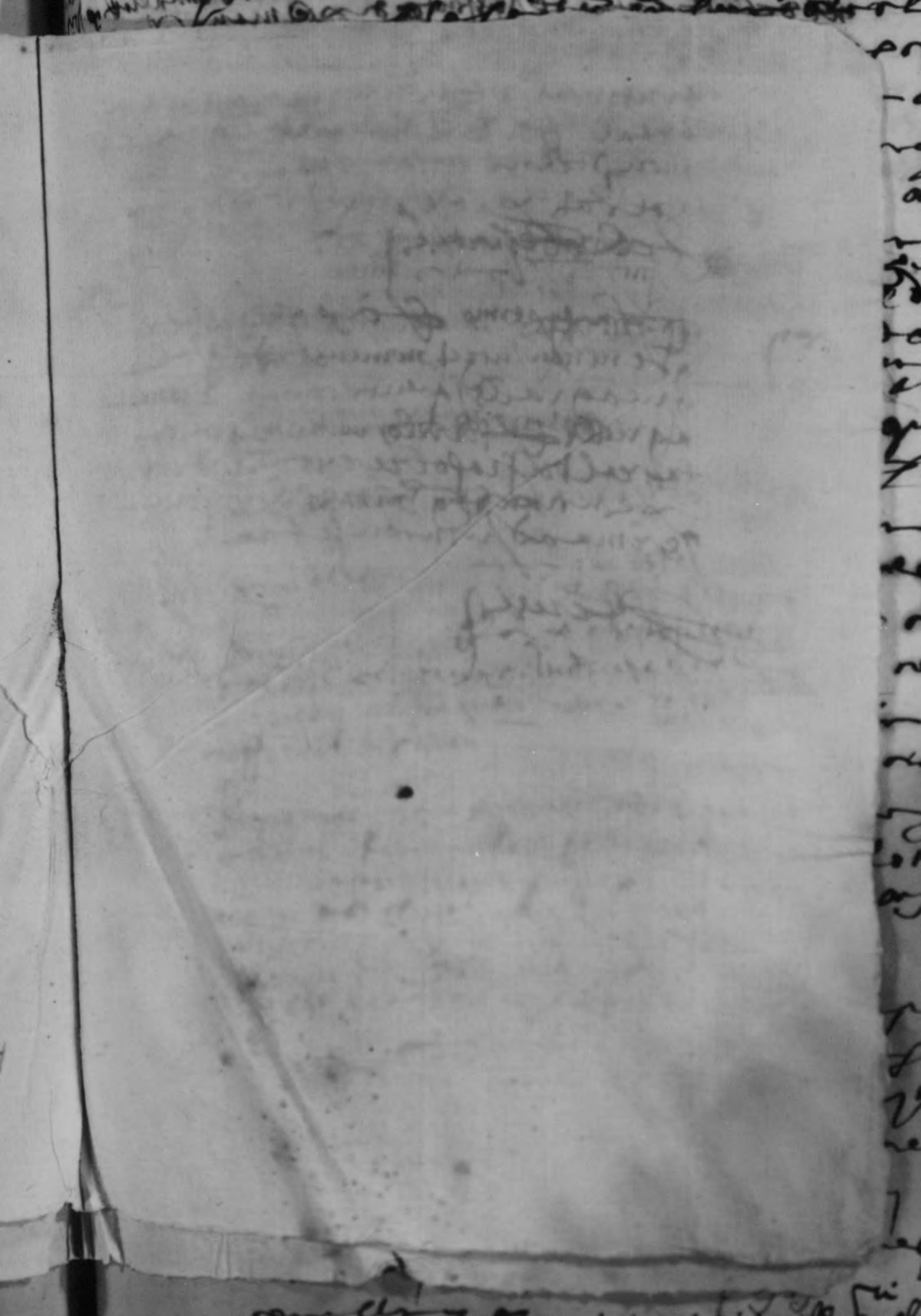
diebus vni decembris anno
magistri XL d. vni
funeraria arde

Per laudis deos mole magis in
sealoria nos in puz de la gli dealy
a profertia de l'puz en linc arant leura
don de la mas parls dealy a sal
muc de rembre ararunt son impetiar ma
nament exentoy contra faptes arant pro
posant p quam q de fet l'puz p llo
muse abli conuquidit d'is de l'puz de
la quantitat en l'puz in mandu d'ual
dare d'ual d'is l'puz y francs arant son
d'umnat ab sententia arbitral donada plot
de l'puz iuribus y arbitris enticay d'is volent
se de p'puz l'puz d'is manament l'puz
ferone d'ual d'is d'is d'is d'is d'is d'is

seruiri lo qual manament en parlant
fuit ed mille es melle p'p'it'at pro
ueste emoltes canes gra p'no suo lo sedn
vires et signantia q' p'p'it'at
Car p'p'it'ament es mille p'com alou lmb
vraie volio den quantat alguna pla
cupo deffo dita p'com degnella es fat
p'p'at planament y moltras p'lo p'p'ose
p'p'ite

Car p'p'it'ament d'ni cosa es ineq' f'ra
p'onar entea no p'p'it'ant q' quello
d'ni Anden arail florit lmb arail p'
p'el ressonia almag' me p'ome valor
vraie d'ni v'nt'nal de p'p'uar
de Vere f'gen p'p'io p'ceem' p'
ex p'ic' v'nt' p'p'it'at p'lo p'p'it'ant
f'et p'p'it'at p'p'it'at p'p'it'at p'p'it'at
p'p'it'at p'p'it'at p'p'it'at p'p'it'at
p'p'it'at p'p'it'at p'p'it'at p'p'it'at

7 Este d'ni cosa vt supra que lo d'ni lmb
arail p'p'it'at y resson' p'p'io del
p'p'it'at d'ni p'p'it'at p'p'it'at al
tuo p'p'it'at alou anden arail p'p'it'at
p'p'it'at



[Faint, illegible handwriting, likely bleed-through from the reverse side of the page.]

Handwritten header text, possibly a title or address, including the name "Stany" and "Joanque" in a cursive script.

Main body of handwritten text, consisting of several lines of dense cursive script. The text is difficult to decipher due to the handwriting style.

A section of handwritten text, possibly a date or a specific reference, including the date "Die hujus xvij Januarij anno Xcclxxviii".

Lower section of handwritten text, continuing the main body of the document. The script remains dense and cursive.

Bottom section of handwritten text, including a page number "796" and some final lines of script.

Handwritten header text, possibly a title or date, including the word "Indragione".

Main body of handwritten text, appearing to be a letter or a record, with several lines of cursive script.

Handwritten text line, possibly a signature or a specific date reference.

Handwritten text line, possibly a date or a reference to a specific event.

Handwritten text line, possibly a date or a reference to a specific event.

272

De verpachting

van de landerijen van de heer van ...

Handwritten notes in the left margin, possibly indicating page numbers or specific sections.

Main body of handwritten text, likely the beginning of a legal document or contract, mentioning various clauses and conditions.

Die ik die mijn ... (A clause starting with 'Die ik die mijn', possibly a condition or a specific article of the agreement.)

Handwritten note in the left margin, possibly a signature or a reference.

Die mijn ... (Another clause starting with 'Die mijn', continuing the legal text.)

Vertical handwritten notes in the left margin, possibly a list or a series of references.

Main body of handwritten text at the bottom of the page, continuing the legal document.

ir
im
un
eu
y
l
eu
im
ej
l
er
.
.
kel
be
n
un
s
im
p
.
.
m
.
y
.
l
t

82A

+

Primo modo delectus et dicitur
 in seipso panis et calicis
 et delectus in seipso
 et delectus in seipso

L

Amixtum

+

Handwritten text in a circular frame, possibly a signature or a decorative header, written in a cursive script.

Handwritten text in a cursive script, possibly a signature or a name, located in the lower middle section of the page.

+

After dinner I went
to court

At court I saw
my old friend

At court I saw
my old friend

At court I saw
my old friend

At court I saw
my old friend

At court I saw
my old friend

At court I saw
my old friend

At court I saw
my old friend

At court I saw
my old friend

At court I saw
my old friend

At court I saw
my old friend

At court I saw
my old friend

At court I saw
my old friend

At court I saw
my old friend

side

nope groen ~~guy~~ 600

de land die vax my die vax my
de land die vax my die vax my
de land die vax my die vax my
de land die vax my die vax my

de land die vax my die vax my
de land die vax my die vax my
de land die vax my die vax my
de land die vax my die vax my
de land die vax my die vax my
de land die vax my die vax my
de land die vax my die vax my
de land die vax my die vax my

de land die vax my die vax my
de land die vax my die vax my
de land die vax my die vax my
de land die vax my die vax my
de land die vax my die vax my
de land die vax my die vax my
de land die vax my die vax my
de land die vax my die vax my

de land die vax my die vax my
de land die vax my die vax my
de land die vax my die vax my
de land die vax my die vax my
de land die vax my die vax my
de land die vax my die vax my
de land die vax my die vax my
de land die vax my die vax my

de land die vax my die vax my
de land die vax my die vax my
de land die vax my die vax my
de land die vax my die vax my
de land die vax my die vax my
de land die vax my die vax my
de land die vax my die vax my
de land die vax my die vax my

+

(Gieprich von Metropolitano
ano 1198 & 1200)

La bonte en gracie jesus manifeste
de l'ame de sainte Marguerite
sept ans de son age de 1198, en
la sainte eglise de Metz, en
la sainte eglise de Metz, en
la sainte eglise de Metz, en
la sainte eglise de Metz, en

requis

© West in the year of 1198
L'ame de sainte Marguerite

10
(The first of the following)

The first of the following
is the first of the following
is the first of the following
is the first of the following
is the first of the following

The first of the following
is the first of the following

Handwritten text at the top of the page, including the word "Lapin" and other illegible words.

Main body of handwritten text, consisting of several lines of cursive script that are mostly illegible due to fading and bleed-through.

Handwritten text at the bottom of the page, including the word "Lapin" and other illegible words.

Handwritten notes or signatures in the bottom left corner, including the number "77".

Handwritten text at the top of the page, including the word "reber" and "d'au" in a cursive script.

Main body of handwritten text in cursive script, containing several lines of dense, illegible handwriting.

#

Handwritten text starting with a hash symbol, possibly a section header or a specific entry.

844

Handwritten text at the bottom of the page, including the word "appretalon" and other cursive script.

[The page contains several lines of handwritten text in a cursive script, which is largely illegible due to fading and bleed-through from the reverse side. The text appears to be organized into paragraphs or sections, with some lines starting with capital letters. A large, dark ink blot is visible on the left side of the page, partially obscuring the text. At the bottom right, there is a faint number '4' and a larger, faint number '812' at the very bottom center.]

4

812

[Faint, illegible handwriting at the top of the page, possibly bleed-through from the reverse side.]

[Faint, illegible handwriting, possibly a date or header.]

[The main body of the page contains several lines of extremely faint, illegible handwriting. The text is mostly obscured by shadows and bleed-through, making it impossible to decipher. Some words like "The" and "of" are barely visible.]

[Small handwritten mark or number on the right margin.]

Handwritten text in a cursive script, likely a historical document or manuscript. The text is dense and covers most of the page, with some lines appearing to be crossed out or heavily faded. The script is difficult to decipher due to its cursive nature and the age of the document.

845

Handwritten text in a cursive script, likely a historical document or letter. The text is dense and covers most of the page. It appears to be written in a historical form of a European language, possibly Dutch or German, given the use of characters like 'v' and 'w'.

847

Small handwritten notes or marginalia on the left side of the page, below the number 847.

[The page contains approximately 30 lines of dense, handwritten text in a cursive script, likely a historical document or manuscript. The ink is dark and the paper shows signs of age and wear.]

849

[The page contains several lines of extremely faint, illegible handwritten text in a cursive script. The ink is very light and the handwriting is dense and overlapping.]

850

[Small handwritten note or signature in the bottom left corner.]

[The majority of the page is filled with dense, illegible handwritten text in a cursive script.]

852

[A section of handwritten text at the bottom of the page, including a signature and possibly a date or reference.]

[Faded handwritten text at the top of the page, possibly a header or title.]

[Main body of handwritten text, appearing to be a letter or a record entry.]

853

[Continuation of handwritten text at the bottom of the page.]

[The page contains several lines of handwritten text in a cursive script, which is largely illegible due to fading and bleed-through from the reverse side. The text appears to be organized into paragraphs or sections, with some lines starting with capital letters or decorative flourishes.]

+

Lo qual al tempo de la dita venda afo
tana ab terra de profunquya, ab ter
me de almy, ab terra de som prones
gab lam de bornyunt, gabien
ra de fiamas foyano, ab morn dal
gab terra de fume tomas de borny
allollada de blandy lo qual mas to
venne ab fany de Langmy, ab m
p gadoro fany any agny, valls fe
de gnyis que poren quita, gense
even de lo qual mas los vennen
poren de quaticanos y trentadol
de pures rebudis profunquya en esta
manera vis cum y sedem gense
los no tempono de lo qual y de
les quita, mas fumes de quita
de borny, de fany fany, cum
de les. Cent hyses. segons indio
pore fany de les qual vis fany
quita. E cum fany fany que
de les quita, fany fany, en
tanta fany que no solo no
poren poren de les, en quita
mas poren poren fany in
fany de les que no poren
poren de les fany fany
quita, fany y, ab morn

+

proia oportuna loque fira grandam delo
gentile ¹⁰⁴ pueri by abnaper epemar
romi ¹⁰⁵ dno empobis pgenora al
dit fmadon que dno voluntayament lo
votmas galle fira consono de roman
loy glapren que quatuor pnes elegidous
gale dno pnt dnan loque ell dno m
rator no pot fu fub pnt dno dno
dit magi pnt aonlla de pnto Per
no ab los pnt dno regner ab dno in
magi pnt dno clara pnt dno ma
nac effe fira conuati de pnto ari
de pnt dno non de pnt dno dno que
belle pnt dno de pnt dno pnt dno
fira dno pnt dno pnt dno pnt dno
tat y pnt dno al dno fmadon galoban
bonament lo dit magi glo pnt dno
dnan los dno quatuor pnt dno elegidous
o glo pnt dno que pnt dno y pnt dno de
dntas lo pnt dno pnt dno glo pnt dno que pnt dno
pnt dno pnt dno pnt dno pnt dno pnt dno
is endra pnt dno pnt dno pnt dno
chagnelle pnt dno pnt dno pnt dno
fira fador de pnt dno

Uc etiam regner y fira dnat pnt dno pnt dno
lo dit magi eleuar a pnt dno que pnt dno pnt dno
fira tant fira pnt dno pnt dno pnt dno pnt dno
Comperunt

[Faint, illegible handwritten text, likely bleed-through from the reverse side of the page.]

862

Handwritten text at the top of the page, appearing to be a header or title in a cursive script.

Handwritten text block, possibly a date or a specific reference, written in cursive.

Main body of handwritten text, consisting of several lines of cursive script, likely a letter or a record entry.

+

Comptes de l'année de l'ancien pignon
de l'année

Le dimanche de l'année de l'ancien pignon
xxvi jarnon de l'ancien pignon de l'ancien
pignon de l'ancien pignon de l'ancien
de l'ancien pignon de l'ancien pignon

de l'ancien pignon de l'ancien pignon
de l'ancien pignon de l'ancien pignon
de l'ancien pignon de l'ancien pignon
de l'ancien pignon de l'ancien pignon
de l'ancien pignon de l'ancien pignon

de l'ancien pignon de l'ancien pignon
de l'ancien pignon de l'ancien pignon
de l'ancien pignon de l'ancien pignon
de l'ancien pignon de l'ancien pignon
de l'ancien pignon de l'ancien pignon

de l'ancien pignon de l'ancien pignon
de l'ancien pignon de l'ancien pignon
de l'ancien pignon de l'ancien pignon
de l'ancien pignon de l'ancien pignon
de l'ancien pignon de l'ancien pignon

de l'ancien pignon de l'ancien pignon
de l'ancien pignon de l'ancien pignon
de l'ancien pignon de l'ancien pignon
de l'ancien pignon de l'ancien pignon
de l'ancien pignon de l'ancien pignon

de l'ancien pignon de l'ancien pignon
de l'ancien pignon de l'ancien pignon
de l'ancien pignon de l'ancien pignon
de l'ancien pignon de l'ancien pignon
de l'ancien pignon de l'ancien pignon

de l'ancien pignon de l'ancien pignon
de l'ancien pignon de l'ancien pignon
de l'ancien pignon de l'ancien pignon
de l'ancien pignon de l'ancien pignon
de l'ancien pignon de l'ancien pignon

~~Handwritten text, possibly a title or header, including the word "Januar" (January).~~

Handwritten text in a cursive script, likely a historical document or manuscript. The text is dense and spans most of the page, with some lines appearing to be crossed out or heavily faded. The script is characteristic of the early modern period.

Handwritten text in a cursive script, likely a historical document or letter. The text is dense and spans most of the page. It begins with a large initial 'L' and contains several lines of text, including what appears to be a date '1583' and a signature 'L. de la Roche'. The script is highly stylized and difficult to decipher in many places.

1583

L. de la Roche

Handwritten text in a cursive script, likely a historical document or letter. The text is dense and difficult to decipher due to the cursive style and fading.

Handwritten text in a cursive script, continuing the document. The ink is dark but the script remains highly stylized and cursive.

Handwritten text in a cursive script, showing further lines of the document. The text is somewhat obscured by shadows and fading.

Handwritten text in a cursive script, appearing to be a distinct section or paragraph. The script is consistent with the rest of the page.

Handwritten text in a cursive script, forming the final visible lines of the document. The text is less legible due to fading and the cursive style.

Handwritten text, likely bleed-through from the reverse side of the page. The text is mirrored and difficult to decipher due to the bleed-through effect.

MS

Handwritten text, likely bleed-through from the reverse side of the page. The text is mirrored and difficult to decipher due to the bleed-through effect.

Handwritten text, likely bleed-through from the reverse side of the page. The text is mirrored and difficult to decipher due to the bleed-through effect.

first
pulls
for
to
2

[Faint, illegible handwritten text, likely bleed-through from the reverse side of the page.]

Handwritten text at the top of the page, including a signature and a date.

Main body of handwritten text, consisting of several lines of cursive script.

[The page contains dense, handwritten text in a cursive script, likely a historical document or manuscript. The text is mostly illegible due to fading and the angle of the page.]

Handwritten text at the top of the page, including the word "L'année" and other illegible words.

Second section of handwritten text, appearing as a list or series of entries.

Third section of handwritten text, possibly a continuation of the list.

Fourth section of handwritten text, continuing the list.

Fifth section of handwritten text, continuing the list.

Sixth section of handwritten text, continuing the list.

Seventh section of handwritten text, continuing the list.

Eighth section of handwritten text, continuing the list.

Ninth section of handwritten text at the bottom of the page.

Handwritten text at the top of the page, possibly a title or header, including the word "magnificat".

Main body of handwritten text in a cursive script, consisting of several lines of dense, flowing handwriting.

Fragment of handwritten text from the adjacent page on the left, showing words like "rom", "la", "in", "no", "lo", "ro", "lo", "he", "otar", "di", "fr", "pas", "rida", "tanso", "que", "uol", "ble", "ere", "oro", "ad", "ty", "me", "m".

Small handwritten marks or symbols on the right margin of the page.

[The page contains dense, handwritten text in a cursive script, likely a historical document or manuscript. The text is mostly illegible due to fading and bleed-through from the reverse side. There are several large, dark ink blotches or corrections in the middle section.]

[Marginal notes in the bottom left corner, written in a smaller hand.]

Handwritten text in a cursive script, likely a historical document or manuscript. The text is dense and spans the entire page, with some lines appearing to be crossed out or heavily scribbled over. The script is dark and somewhat faded, making it difficult to read. The page is numbered 905 at the bottom center.

[The page contains dense, illegible handwritten text in a cursive script, likely a historical document or manuscript.]

[The page contains dense, handwritten text in a cursive script, which is largely illegible due to fading and bleed-through from the reverse side. The text appears to be organized into several paragraphs.]

Handwritten text in a cursive script, likely a historical document or letter. The text is dense and spans most of the page. It begins with a large initial 'A' and contains several lines of text, including what appears to be a date or reference to a specific day. The script is highly stylized and characteristic of the early modern period. The text is written in dark ink on aged, slightly yellowed paper. There are some faint markings and a small cross at the top center of the page. The right edge of the page shows some wear and a small mark.

Representative to the Congress
of the United States
in the year 1800
of the State of New York
James M. Smith
of the County of Albany
to the Honorable
John Jay
Secretary of the Senate
Washington
Dear Sir
I have the honor to acknowledge
the receipt of your letter
of the 10th inst. in relation
to the petition of
James M. Smith
of the County of Albany
State of New York
for admission to the
Senate of the United States
I have the honor to inform
you that the Senate
of the United States
has not yet taken
any action upon
the petition of
James M. Smith
I am, Sir, very
respectfully,
Your obedient servant,
John Jay

donob et in m... die... mi
... ..

... ..
... ..
... ..

... ..
... ..
... ..

... ..
... ..
... ..

... ..
... ..
... ..

... ..
... ..
... ..

... ..
... ..
... ..

... ..
... ..
... ..

... ..
... ..
... ..

... ..
... ..

Handwritten text on the left edge of the page, partially cut off.

Handwritten scribbles or a signature on the right edge of the page.

923



92H

et

Seigneur de L'Archevesche de
Paris par ces lettres
Je vous prie de vous en
rejoindre.

1

Amour

925

+

Handwritten text, possibly a signature or name, written in a cursive script. The text is mirrored across the page, suggesting bleed-through from the reverse side. It appears to contain the name "John" and "of" followed by some illegible words.

T

Handwritten text, possibly a signature or name, written in a cursive script. The text is mirrored across the page, suggesting bleed-through from the reverse side. It appears to contain the name "John" and "of" followed by some illegible words.

[The page contains approximately 30 lines of dense, handwritten text in a cursive script, likely a historical document or manuscript. The ink is dark and the handwriting is somewhat faded and difficult to decipher. The text appears to be organized into paragraphs, with some lines starting with capital letters. The overall appearance is that of an old, well-used document.]

[The page contains approximately 25 lines of handwritten text in a cursive script, which is largely illegible due to fading and blurring. The text appears to be a continuous paragraph or a list of entries.]

[Faint, illegible handwritten text in cursive script, likely bleed-through from the reverse side of the page.]

[The page contains approximately 30 lines of dense, handwritten text in a cursive script, likely a historical document or manuscript. The ink is dark and the paper shows signs of age and wear.]

931

[Marginal notes on the left side of the page, including the number 931 and other faint, illegible handwriting.]

... februario ...

... die ...

... de ...

... et ...

... et ...

... et ...

... et ...

... et ...

... et ...

... et ...

... et ...

... et ...

... et ...

... et ...

922 ...

~~Handwritten text, mostly illegible due to fading and bleed-through.~~

Dei in Veritate...
...remix

~~Handwritten text, mostly illegible due to fading and bleed-through.~~

...ano die LXXII
...ano Sta

~~Handwritten text, mostly illegible due to fading and bleed-through.~~

1779

Die mijns te be am
an de kom y y ptech
semamio

1779

J'annus la pte am de vos mag
en tu sep tua a ramora m m tustro
delala de alny plonalmet ampard
lo honre en Gabrel semamario laura
dor habm en lollor de demiffalim Edm
de poffo que lo honre en andreu raya
fuit delluy ja tu any por memy que
es mort sans fance per repemes ne
abra de pofiro de fofbens lo qual
le demy quinze luy y les de poffe
de agnelles luy y mly luyre glom
fess de ure y les miff erapont oute
pudes en tu ure dedente rebm y vos
du mag miff en sep tua a ramora
de miff de any aut 0
L // Eom moy y y plone legit mo
ab qui ell d m pofam ture y pigniz
la co gte fca roma de andreu
raya en pere luyre luyre restro

de ell d'uy posam del qual se ve
del d'uy per l'inter d'uy d'uy y a requirir
abos du mag' Justicia by l'ay rebre l'inter
no l'informano de d'uy monis e by a quella
vot constara l'ordin andreu p'ya e l'inter monis
l'inter by l'ay f'era conuocato reparant
eligit en d'uy en m'ador de l'inter
l'inter y l'inter de l'inter p'ya e l'inter
en d'uy de d'uy l'inter y l'inter de l'inter
de l'inter l'inter l'inter l'inter l'inter
poder y a entienentz en l'inter de l'inter de
d'uy de m'ador p'ya a l'inter m'ador
es a l'inter de l'inter l'inter l'inter
c'el'inter l'inter l'inter l'inter y d'uy
l'inter de l'inter y l'inter

Non vobis caris precibus
quis in episcopo

[Faint, illegible handwritten text, possibly bleed-through from the reverse side of the page.]

die die fad amica am p...
L... V...
L...
P...
P...

Handwritten signature or name in the bottom right corner.

+

Handwritten text in a cursive script, possibly a signature or a short note, enclosed in a large, decorative flourish.

Handwritten text in a cursive script, appearing to be a list or a set of instructions, possibly related to a medical or scientific study.

Handwritten text in a cursive script, possibly a signature or a short note.

Handwritten text at the top of the page, possibly a title or header, including a small cross symbol.

Handwritten text in the upper middle section of the page.

Main body of handwritten text in the middle section of the page.

Handwritten text in the lower middle section of the page, partially obscured by a large dark stain.

Small handwritten text or signature at the bottom left corner.

936

Fragment of handwritten text visible on the adjacent page to the right.

Francisco Carbonell y Sto. nuncio andelo de

de yuffar y de yuffar y de yuffar y de yuffar

de yuffar y de yuffar y de yuffar y de yuffar

de yuffar y de yuffar y de yuffar y de yuffar

de yuffar y de yuffar y de yuffar y de yuffar

de yuffar y de yuffar y de yuffar y de yuffar

de yuffar y de yuffar y de yuffar y de yuffar

de yuffar y de yuffar y de yuffar y de yuffar

Handwritten text at the top of the page, possibly a title or header, including the word "CANTONUM".

Handwritten text below the title, possibly a date or reference, including the word "LXXXIIII".

Main body of handwritten text, appearing to be a list or account, with several lines of dense script.

Dono Inghelwelle Jno Agostinoroles

[Extremely dense and mostly illegible handwritten text, likely a legal or administrative document.]

Et p[ro]tudo l[ic]et l[ic]et l[ic]et mod[is] n[on] p[ro]p[ri]o queas ex
t[er]ra quella ab[er]ro quella p[ro]p[ri]o p[ro]p[ri]o p[ro]p[ri]o p[ro]p[ri]o p[ro]p[ri]o
que de p[ro]p[ri]o p[ro]p[ri]o p[ro]p[ri]o p[ro]p[ri]o p[ro]p[ri]o p[ro]p[ri]o p[ro]p[ri]o p[ro]p[ri]o
fora compl[et]o p[ro]p[ri]o p[ro]p[ri]o p[ro]p[ri]o p[ro]p[ri]o p[ro]p[ri]o p[ro]p[ri]o p[ro]p[ri]o

Inde In primo
manu Charles
de Montau de la
primera

pasqual puer gtra noffice roregroffa
furovum

Lo moel Just en sempre ab for somo @ misraige y cu
sona deldit pasqual puer a redio sonolmens
alora deldit noffice roregroffa pferlo supio
de boni requesta y esoneo quella con ruyis lo dit
noffice roregroffa deo Brases de volunary pnto
deldit pasqual puer y pua lo dit mag Just ho plena
@ complida penguie hee ruyis dano @ sym
porel demiles pnto de lora de p galdit noffice
roregroffa pomenon refuoyio dier de fce d mlt
o pagar loquany demanoda @ met d ruyis de
beny gona d m m l o r y d

Te p anquillim p ruy y frances velle
p ruy a d e l o r y

Ino esmeny lo dit mag Just d ruy p man @ p ande
burgom f ruy o d e l o r y

de d ruy misraige rebur en f l o d r u m a n d p r u y t i
p l o p p y d e f e r r o m a n t @ p r u r e t p h a n e r
J u n t a r d r u o f e r r o d o r d e a r o

de f e r r o d i a r o p r u y p r u y p r u y e f f e r r o
d r u y p o n f i a p r u y p r u y p r u y p r u y p r u y
d r u y p r u y p r u y p r u y p r u y p r u y p r u y
n o d r u y d r u y p r u y p r u y p r u y p r u y p r u y
d e l l i t r o r u y p r u y p r u y p r u y p r u y p r u y
p r u y p r u y p r u y p r u y p r u y p r u y p r u y
p r u y p r u y p r u y p r u y p r u y p r u y p r u y

interdictio supra
nominatim de
militibus p[er]tinet

Amstelredamum & de h[ab]itu s[er]v[iti]o supra ob[er]na

in festo sancti Michaelis debent nobles de h[ab]itu solent
de offerre de aliquo unum aliter ut dicitur in
servitio de h[ab]itu s[er]v[iti]o sicut in summo h[ab]itu
de h[ab]itu de aliquo sicut est offerre nosse sicut
sunt in festo die sicut in festo sicut in festo
de h[ab]itu

de h[ab]itu de h[ab]itu sicut in festo sicut in festo
de h[ab]itu sicut in festo sicut in festo

de h[ab]itu

de h[ab]itu sicut in festo sicut in festo
de h[ab]itu sicut in festo sicut in festo
de h[ab]itu sicut in festo sicut in festo

de h[ab]itu

de h[ab]itu sicut in festo sicut in festo
de h[ab]itu sicut in festo sicut in festo

Amsterdam 1700

Amsterdam 1700

Amsterdam 1700

Amsterdam 1700

Amsterdam 1700

Amsterdam 1700

[The page contains dense, highly stylized cursive handwriting, likely a historical document or manuscript. The text is written in a dark ink on aged, slightly yellowed paper. The script is very fluid and interconnected, characteristic of the late 15th or early 16th-century Italian or Spanish cursive. The text is arranged in approximately 25 horizontal lines, filling most of the page area. Some words are more legible than others due to the density of the script.]

de franc

secundo mensis

Genes

Genes

Genes

Genes

Genes

Genes

Genes

Genes

Genes

Genes

Genes

Genes

Genes

de bono...
@ generalis...
y mel...

[The majority of the page is obscured by a large, dense black ink blot, rendering the text illegible. Only faint traces of handwriting are visible through the blot.]

Handwritten text at the top of the page, including a large initial 'ff' and some illegible cursive script.

Main body of dense, dark, and mostly illegible handwritten text in cursive script, covering most of the page.

[The page contains dense, handwritten text in a cursive script, which is largely illegible due to extreme ink saturation and bleed-through from the reverse side of the page.]

[The page contains dense, handwritten text in a cursive script, which is largely illegible due to extreme fading and ink bleed-through from the reverse side. The text appears to be organized into several paragraphs.]

~~Handwritten text at the top of the page, possibly a title or header.~~

Handwritten text in a cursive script, appearing to be a list or a series of entries.

Main body of handwritten text, consisting of several paragraphs of cursive script. The text is dense and difficult to decipher due to the style and fading.

[The page contains dense, illegible handwritten text in a cursive script, likely a historical document or manuscript.]

[The page contains dense, handwritten text in a cursive script, which is largely illegible due to fading and bleed-through from the reverse side. The text appears to be organized into several paragraphs or sections.]

vicar moting of Westmyrden

the year of 1580 my divers

years of my in service my self

in my service and my self

in my service and my self

in my service and my self

in my service and my self

in my service and my self

in my service and my self

in my service and my self

in my service and my self

in my service and my self

in my service and my self

in my service and my self

in my service and my self

in my service and my self

in my service and my self

in my service and my self

in my service and my self

in my service and my self

in my service and my self

in my service and my self

in my service and my self

in my service and my self

in my service and my self

in my service and my self

in my service and my self

in my service and my self

in my service and my self

in my service and my self

Handwritten text at the top of the page, possibly a header or title.

Handwritten text, first line of the main body.

Handwritten text, second line of the main body.

Handwritten text, third line of the main body.

Handwritten text, fourth line of the main body.

Handwritten text, fifth line of the main body.

Handwritten text, sixth line of the main body.

Handwritten text, seventh line of the main body.

Handwritten text, eighth line of the main body.

Handwritten text, ninth line of the main body.

Handwritten text, tenth line of the main body.

...mola ...
...mola ...

...mola ...
...mola ...

...mola ...
...mola ...

...mola ...
...mola ...

...mola ...
...mola ...

...mola ...
...mola ...

...mola ...
...mola ...

...mola ...
...mola ...

...mola ...
...mola ...

...mola ...
...mola ...

...mola ...
...mola ...

...mola ...
...mola ...

...mola ...
...mola ...

Handwritten text in a cursive script, likely a medieval manuscript. The text is dense and somewhat obscured by ink bleed-through from the reverse side of the page. It appears to be a list or a series of entries, possibly related to a legal or administrative document.

Handwritten text in a cursive script, likely a medieval manuscript. The text is dense and somewhat obscured by ink bleed-through from the reverse side of the page. It appears to be a list or a series of entries, possibly related to a legal or administrative document.

marini anno gratiam de d. 20m

Et p[ro]p[ri]a l[ib]erata et l[ib]erit mod[is] p[ro]p[ri]a
et b[e]n[e]ficio p[ro]p[ri]a

Ad d[omi]n[u]m de d[omi]n[u]m p[ro]p[ri]a p[ro]p[ri]a p[ro]p[ri]a
p[ro]p[ri]a p[ro]p[ri]a p[ro]p[ri]a p[ro]p[ri]a

Al molle m[ol]le p[ro]p[ri]a p[ro]p[ri]a p[ro]p[ri]a p[ro]p[ri]a
al[ia]m d[omi]n[u]m de d[omi]n[u]m p[ro]p[ri]a p[ro]p[ri]a p[ro]p[ri]a
p[ro]p[ri]a p[ro]p[ri]a p[ro]p[ri]a p[ro]p[ri]a p[ro]p[ri]a p[ro]p[ri]a

Et p[ro]p[ri]a p[ro]p[ri]a p[ro]p[ri]a p[ro]p[ri]a p[ro]p[ri]a p[ro]p[ri]a
p[ro]p[ri]a p[ro]p[ri]a p[ro]p[ri]a p[ro]p[ri]a p[ro]p[ri]a p[ro]p[ri]a
p[ro]p[ri]a p[ro]p[ri]a p[ro]p[ri]a p[ro]p[ri]a p[ro]p[ri]a p[ro]p[ri]a

Et p[ro]p[ri]a p[ro]p[ri]a p[ro]p[ri]a p[ro]p[ri]a p[ro]p[ri]a p[ro]p[ri]a
p[ro]p[ri]a p[ro]p[ri]a p[ro]p[ri]a p[ro]p[ri]a p[ro]p[ri]a p[ro]p[ri]a
p[ro]p[ri]a p[ro]p[ri]a p[ro]p[ri]a p[ro]p[ri]a p[ro]p[ri]a p[ro]p[ri]a

Et p[ro]p[ri]a p[ro]p[ri]a p[ro]p[ri]a p[ro]p[ri]a p[ro]p[ri]a p[ro]p[ri]a
p[ro]p[ri]a p[ro]p[ri]a p[ro]p[ri]a p[ro]p[ri]a p[ro]p[ri]a p[ro]p[ri]a
p[ro]p[ri]a p[ro]p[ri]a p[ro]p[ri]a p[ro]p[ri]a p[ro]p[ri]a p[ro]p[ri]a

Et p[ro]p[ri]a p[ro]p[ri]a p[ro]p[ri]a p[ro]p[ri]a p[ro]p[ri]a p[ro]p[ri]a
p[ro]p[ri]a p[ro]p[ri]a p[ro]p[ri]a p[ro]p[ri]a p[ro]p[ri]a p[ro]p[ri]a

videtur p[er] hoc temp[us] que[m] magis superior manus nosse
manem oldit nosse bonum de p[ro]p[ri]o de p[ro]p[ri]o d[omi]no
trio[m] videtur que[m] magis superior manus nosse
me[m]brum p[er] hoc temp[us] que[m] magis superior manus nosse

[The following text is extremely faint and illegible due to fading and bleed-through from the reverse side of the page.]

[The page contains approximately 25 lines of dense, handwritten text in a cursive script. The ink is dark and the handwriting is very fluid and interconnected, making it difficult to decipher individual words. The text appears to be a continuous paragraph or a list of entries.]

[The page contains approximately 25 lines of dense, handwritten text in a cursive script, which is largely illegible due to fading and bleed-through from the reverse side.]

[A few lines of text at the bottom of the page, including the name 'Gom' and some other illegible words.]

[Faded handwritten text, likely bleed-through from the reverse side of the page]

[Faded handwritten text, possibly a signature or a line of a letter]

[Faded handwritten text, possibly a name]

[Faded handwritten text, possibly a signature or a line of a letter]

[Faint, mostly illegible handwritten text in a cursive script, possibly from a 17th or 18th-century manuscript. Some words like "Lage" and "Lage" are visible.]

[A single line of faint handwritten text, possibly a signature or a specific note.]

andrews in 8 Jan 1810

Dear my dear Mother
I received your kind letter
of the 24th and was glad
to hear from you

I am well at present
and hope these few lines
will find you the same
I have not much news
to write at present
but I am glad to hear
that you are all well
I have not much news
to write at present
but I am glad to hear
that you are all well

I have not much news
to write at present
but I am glad to hear
that you are all well
I have not much news
to write at present
but I am glad to hear
that you are all well

I have not much news
to write at present
but I am glad to hear
that you are all well
I have not much news
to write at present
but I am glad to hear
that you are all well

[Faint, illegible handwritten text in a cursive script, likely from a 17th or 18th-century manuscript.]

[Faint, illegible handwritten text in a cursive script, continuing from the top section.]

Handwritten text at the top of the page, possibly a header or title, written in a cursive script.

Main body of handwritten text, consisting of several lines of cursive script, likely a letter or a short treatise.

Lower section of handwritten text, continuing the cursive script, possibly a signature or a concluding paragraph.

Handwritten text in a cursive script, likely a historical document or manuscript. The text is dense and spans most of the page, with some lines appearing to be crossed out or heavily faded. The script is characteristic of the late 16th or early 17th century. The text is written in a dark ink on aged, slightly yellowed paper. The handwriting is very fluid and connected, with many loops and flourishes. The overall appearance is that of a well-used, possibly official, document.

[Faint, mostly illegible handwritten text at the top of the page, possibly bleed-through from the reverse side.]

Gaspar molle
in rito

[Large, stylized handwritten signature or name.]

de la casa de
San Francisco

[Vertical handwritten text on the right edge of the page, possibly a date or reference.]

[The page contains dense, handwritten text in a cursive script, which is largely illegible due to extreme fading and blurring. The text appears to be organized into several paragraphs, with some lines starting with capital letters or decorative initials. The ink is dark but very faded, and the paper shows signs of age and wear.]

#

Handwritten text in a cursive script, likely a historical document or manuscript. The text is dense and spans the entire page, with some lines appearing to be crossed out or heavily scribbled over. The script is characteristic of the late 16th or early 17th century. The text is written in a dark ink on aged, slightly yellowed paper. The handwriting is very fluid and connected, with many loops and flourishes. The overall appearance is that of a personal or official record, possibly a letter or a set of accounts. The text is written in a single column, filling most of the page's width. There are some faint markings and what appears to be a signature or name at the bottom right, though it is difficult to decipher due to the cursive style and fading. The paper shows signs of age, including some staining and uneven coloring.

[Faint, mostly illegible handwriting at the top of the page, possibly bleed-through from the reverse side.]

Die vijndt vermy me in mijn
d'rom d'vanant p'nt deland
vrij van onse v'f'p'nt p'f'ent
v'f'nt v'f'nt v'f'nt

[A large block of dense, cursive handwriting, largely illegible due to fading and bleed-through.]

[Faint handwriting at the bottom of the page, including a signature and possibly a date.]

Handwritten text in a cursive script, likely a historical document or manuscript. The text is dense and spans the entire page, with some lines appearing to be crossed out or heavily scribbled over. The ink is dark, and the paper shows signs of age and wear.

Handwritten text in a cursive script, likely a historical document or letter. The text is dense and covers most of the page, with some lines appearing to be crossed out or heavily faded. The script is characteristic of the 16th or 17th century.

125
V. de p. m.
manu

1014

[Illegible handwritten text, likely bleed-through from the reverse side of the page]

[Faint, mostly illegible handwritten text in a cursive script, possibly a historical document or manuscript.]

[A few lines of clearer handwritten text, possibly a signature or a specific section header.]

[The page contains approximately 25 lines of handwritten text in a cursive script, which is almost entirely illegible due to extreme ink bleed-through from the reverse side of the page. The text is written in dark ink on aged, slightly yellowed paper.]

[Faint handwritten text visible along the left edge of the page, likely bleed-through from the reverse side.]

[The main body of the page contains several lines of extremely faint, illegible handwriting, possibly in cursive or a similar script. The text is significantly obscured by numerous dark spots, smudges, and a large, dark, irregular stain that covers the lower right portion of the page.]

1023



Handwritten text at the top of the page, possibly a title or header, including the word "Hinc".

Handwritten text in the middle section, including the words "Hinc", "X", and "V".

Handwritten text in the lower section, starting with "Hinc" and containing several lines of dense script.

mes vtil y expedient. aldis meroni
march y Gmefo menor' Star aixoim
damunse conpe. que no affermarlos ab
altri pmo que ampa aduonta perfo
ra cum ditor' y mmbrem quelis re no
poru qmny pfoloda. Vol plosa dere
tarob vos y parer ded m parens y
promens connotador' effe mes vtil
e conotetur aldis meroni march
y Gmefo. Star aixoim con damunse
y a vobis ~~me y~~ Andia ~~connotador'~~
Star ena p delding p pssans. l'effe n
de peraxre e Gmefo. Star ena p
de famore que no affermarlos ab altri
e p conseqm aixoimore y declar
ledis menor' del rom q' que mxi Staro
no poder redere de huanr. sofo alqmo
aldis p pssans. erdir mota p pss
de foloda. con plimend de loquales
p pssans e y

Handwritten text, likely bleed-through from the reverse side of the page. The text is mirrored and difficult to decipher due to the bleed-through effect.

Handwritten signature or name
The text appears to be a signature or a name written in a cursive script, possibly including the word "James" or similar.

Additional handwritten text, possibly bleed-through or a second signature, located below the main signature block.

Vertical handwritten text along the right edge of the page, possibly a page number or a marginal note.

francosomocari parente de par- omocari
ab don ransio poma de lantare delo
dismenod' Gmssano p... de
Gms Joann Lamora. menordmos
voldh' accens de par- demace
mo & phelpa fello y magt
Alfa p... .

Invenes

tinguerenbe glori meromy m
Studie & mar' d'agua en f...
myr anys fense f... al
lofin & refimlo glodis
Gniefo. Signo ar... de fa
mace quod... f... f...
vocalian... lodis m...
pejo afferm... f...
feropa poder f...
Invenes mer mojo y
m... y m...

Handwritten marginal notes on the left side of the page, including a large initial 'S' and several lines of text.

Main body of handwritten text in a cursive script, covering most of the page. The text is significantly faded and obscured by large, dark water stains at the bottom.

Small handwritten notes at the bottom left corner, possibly including the words 'b. de' and 'man'.

Handwritten number '1024' at the bottom right corner of the page.

11
12
13
14
15
16
17
18
19
20
21
22
23
24
25
26
27
28
29
30
31
32
33
34
35
36
37
38
39
40
41
42
43
44
45
46
47
48
49
50
51
52
53
54
55
56
57
58
59
60
61
62
63
64
65
66
67
68
69
70
71
72
73
74
75
76
77
78
79
80
81
82
83
84
85
86
87
88
89
90
91
92
93
94
95
96
97
98
99
100

[The page contains dense, handwritten text in a cursive script, likely a historical document or manuscript. The text is mostly illegible due to fading and bleed-through from the reverse side.]

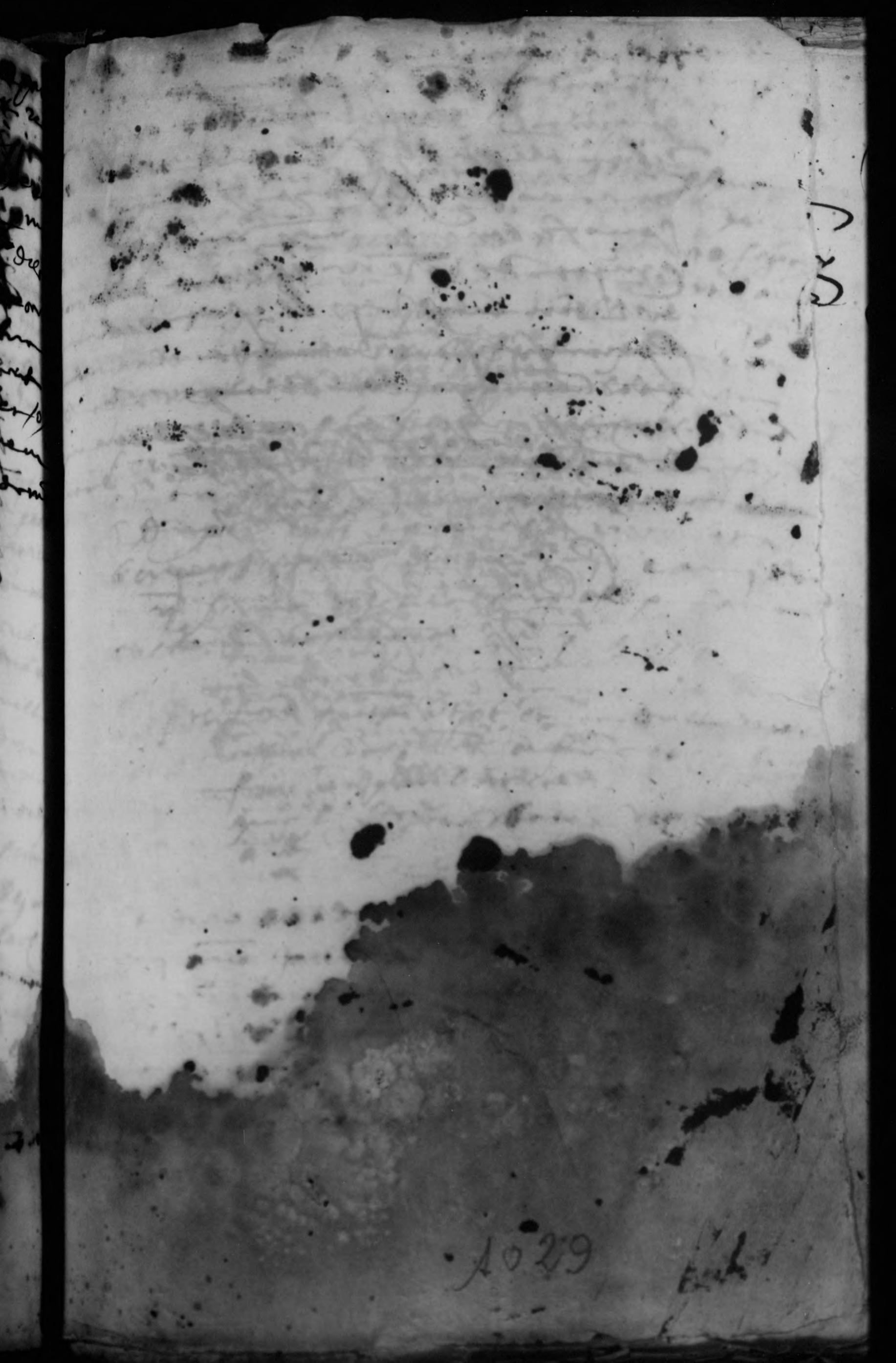
6 de
mar
169

[Faded, illegible handwritten text in cursive script, likely bleed-through from the reverse side of the page.]

[Faded, illegible handwritten text in cursive script, likely bleed-through from the reverse side of the page.]

[Faded, illegible handwritten text in cursive script, likely bleed-through from the reverse side of the page.]

b
m
l



Handwritten text on the left edge of the page, partially obscured by the binding.

Handwritten markings on the right edge of the page, possibly initials or a signature.

Main body of faint, illegible handwriting on the page, appearing as ghostly lines across the surface.

1029

Handwritten text or signature at the bottom right of the page.

11

525

1030

+

Deer me de Letres del m^og
en el d^o de an o f a m e r m o n
y en el d^o de a l o r d e l a n y
de n u n n i c o n d e m e s e n o r
H o l o m i

L

Am X o l o m i

[Faint signature]

1031

Handwritten text in a circular frame, possibly a signature or a decorative header. The text is written in a cursive script and is difficult to decipher due to the angle and fading. It appears to contain several lines of text, possibly including a name and a date or location.

Handwritten text in the middle of the page, consisting of several lines of cursive script. The text is very faint and mostly illegible. It appears to be a continuation of the text from the top of the page.

1032

regis... / *[Faint, mostly illegible handwritten text in a cursive script, likely a historical document or letter.]*

1036

Viseja y. maney... m. l. y. b. w.

Handwritten text in a cursive script, likely a historical document or letter. The text is dense and covers most of the page.

#

De quatuordecim... anno...
...
Almogor...

ffona
liber...

1008

Handwritten text at the bottom of the page, possibly a signature or a concluding note.

Handwritten text at the top of the page, appearing to be a preface or introductory section.

Handwritten text in the upper middle section, possibly a title or a specific heading.

Main body of handwritten text, starting with a large initial 'Ihs' on the left margin. The text is dense and covers most of the page.

to anno et Janne velle nra
aigofel jellu pruum vijuel
zy fia uan jir. Vj zy fia sel
tuzey x vanij bouella
Jum

tingued obe glomodu preejui preejio
gelofo calrasbens fedehedepoale parricij
calofrenno delin pamples @ tamboque
pumpo vanda la pat d'elodia anno 1570
vniuersal dingitio docto p pende eeevj
@ pof defunbr @ taturang d'miuit ola
ditnamu p temp de jua any romador
geldio d'el mou deldit pan g'les botren
li den d'miuit

vs Ginnibou y Ginnuig teijorda
delm

[Faint, illegible handwritten text, possibly bleed-through from the reverse side of the page.]

10/2

[Faint handwritten text visible on the right edge of the page.]

Vile... magis...
1043
[The rest of the page contains dense, illegible handwritten text in a cursive script.]

Handwritten text in a cursive script, likely a historical document or letter. The text is dense and spans most of the page, with some lines appearing to be crossed out or heavily scribbled over. The ink is dark, and the paper shows signs of age and wear.

ff

10714

Handwritten text at the bottom of the page, possibly a signature or a concluding note. It includes the name 'C. W. ...' and other illegible characters.

Handwritten text in a cursive script, likely a historical document or letter. The text is dense and spans most of the page. At the top right, there is a large, stylized signature or name, possibly "Gentleman". The text is written in dark ink on aged, slightly yellowed paper. The handwriting is very fluid and characteristic of the 17th or 18th century. There are some faint markings and bleed-through from the reverse side of the page. The text appears to be a formal communication, possibly a petition or a report, given the use of terms like "obligation" and "debt" visible in the lower half.

10H5

Handwritten text in a cursive script, likely a historical document or manuscript. The text is dense and spans the entire page, with some lines appearing to be crossed out or heavily faded. The script is characteristic of the 17th or 18th century. The text is written in a dark ink on aged, slightly yellowed paper. The handwriting is very fluid and connected, making it difficult to decipher without specialized knowledge of the language and script. There are some larger, more distinct words or phrases that stand out, such as 'Mariano' and 'Mariano' which appear to be names or titles. The overall appearance is that of a well-used, possibly official, document from a past era.

[The page contains approximately 25 lines of dense, handwritten text in a cursive script. The ink is dark and the handwriting is highly stylized and somewhat illegible due to the cursive nature and some fading. The text appears to be a continuous paragraph or a series of related notes.]

[The page contains dense, handwritten text in a cursive script, likely a historical document or manuscript. The text is written in dark ink on aged, slightly yellowed paper. The handwriting is highly stylized and difficult to decipher. There are several lines of text, with some appearing to be crossed out or heavily faded. The overall appearance is that of an old, handwritten document.]

4

[Faint handwritten text at the bottom of the page, possibly a signature or a date.]

Handwritten header text at the top of the page, possibly including a date or page number.

Main body of handwritten text, appearing to be a list or account, written in a cursive script.

1052

Handwritten mark or signature at the bottom right corner.

cellerlogua p mra b rmer y loquu d d m e l l d i
re p m o m p p m r a g e t l o a l l o g b o r a m a p l o r a q f e n
m e t o d u m d e r a l l e y p l o r e s f e p e r y p o a r t o
p e r f o r e l l e s t e p e r a n t a b l o r a t u m e s f e g m r d e y o
o m n i d e r e t o m n i

procurator si vult ceter ab qui barataria y p a r o u
l e s e l e t m r o p e d r o h e r m a n d e t q u i p r a p n a p i n s t a n c i a
a l q u o s e f a l t q u i p r e m o r a e t d i p q u e n o a n g e r o
p m a t r e s i m p m e d i f f e t q u e r e d d e m r e s e d o h o r
n a n d e t y p o r f o r t e h e r o e t a e m o d e d y o

procurator dicitur tempore p r e s e n t i s p e l l o r
p e n s e t i m p o r e d e s t e s e p a r q u e m o l s e o
p e r f o n t e p r i m a d e l t y d o e r n o c r e s i d a n t
c a d r i x t o m o r y m a d e l y e t a t

Generalis
p r o c u r a t o r

106

Extremely faint and illegible handwritten text covering the bottom half of the page.

Handwritten text in a cursive script, likely a historical document or manuscript. The text is dense and spans most of the page, with some lines appearing to be crossed out or heavily scribbled over. The ink is dark, and the paper shows signs of age and wear.

Page 1066

1066

vi
m

[The page contains approximately 25 lines of dense, handwritten text in a cursive script, likely from a 17th or 18th-century manuscript. The text is written in dark ink on aged, slightly yellowed paper. The handwriting is highly stylized and difficult to decipher without specialized knowledge of the script. The lines are closely spaced and run across the width of the page, with some variations in line length and spacing.]

1068

~~Handwritten text, mostly illegible due to fading and bleed-through from the reverse side of the page.~~

1069

68

[The page contains dense, handwritten text in a cursive script, which is largely illegible due to fading and blurring. The text appears to be organized into several lines or paragraphs.]

1070

+

Handwritten text at the top of the page, including a large initial 'S' and a cross symbol.

Main body of handwritten text, appearing to be a list or account of items.

Handwritten text in the middle section, possibly a continuation of the list.

Handwritten text at the bottom of the page, including a large initial 'S'.

Vertical text on the left margin, possibly a list of numbers or small notes.

40

[The page contains approximately 25 lines of dense, handwritten text in a cursive script. The ink is dark and the handwriting is highly stylized and somewhat illegible due to the cursive nature and some fading. The text appears to be a continuous paragraph or a series of related entries.]

1042

1043

1044

vice regis ...

... de ...

... de ...

Handwritten text in a cursive script, likely a historical document or manuscript. The text is dense and spans most of the page, with some lines appearing to be crossed out or heavily scribbled over. The ink is dark, and the paper shows signs of age and wear.

1082
Handwritten text at the bottom of the page, including a date (1082) and several lines of cursive script.

Handwritten text in a cursive script, likely a letter or a page from a manuscript. The text is dense and fills most of the page. It appears to be a personal communication, possibly a letter, given the use of "vostre" (your) and "vostre" (yours) in the lower section. The script is highly stylized and characteristic of the late 16th or early 17th century.

Handwritten text in a cursive script, likely a letter or a page from a manuscript. This section contains several lines of text, including the word "vostre" (your) and "vostre" (yours), suggesting it is a personal communication. The script is consistent with the rest of the page.

Handwritten text in a cursive script, likely a letter or a page from a manuscript. This section contains several lines of text, including the word "vostre" (your) and "vostre" (yours), suggesting it is a personal communication. The script is consistent with the rest of the page.

Vostre
vostre

Uzine de papier
de la papeterie

Les uns ont dit que l'on vend
ce papier de la papeterie
de la papeterie de la papeterie
de la papeterie de la papeterie
de la papeterie de la papeterie
de la papeterie de la papeterie
de la papeterie de la papeterie
de la papeterie de la papeterie

ferme de la papeterie
de la papeterie de la papeterie

de la papeterie de la papeterie
de la papeterie de la papeterie

1085

Handwritten text at the top of the page, possibly a title or header, written in a cursive script.

Several lines of handwritten text in cursive script, appearing to be the beginning of a letter or document.

More lines of handwritten text in cursive script, continuing the text from the previous section.

1086

meo p[ro]p[ri]o r[ati]o[n]e b[e]n[e]d[i]c[t]o q[uo]d p[er] m[ul]tas p[ar]te

q[uo]d d[e] f[aci]t q[uo]d d[e] p[ar]te p[ro]p[ri]a
q[uo]d d[e] p[ar]te p[ro]p[ri]a q[uo]d d[e] p[ar]te p[ro]p[ri]a

q[uo]d d[e] p[ar]te p[ro]p[ri]a q[uo]d d[e] p[ar]te p[ro]p[ri]a
q[uo]d d[e] p[ar]te p[ro]p[ri]a q[uo]d d[e] p[ar]te p[ro]p[ri]a

q[uo]d d[e] p[ar]te p[ro]p[ri]a q[uo]d d[e] p[ar]te p[ro]p[ri]a
q[uo]d d[e] p[ar]te p[ro]p[ri]a q[uo]d d[e] p[ar]te p[ro]p[ri]a

q[uo]d d[e] p[ar]te p[ro]p[ri]a q[uo]d d[e] p[ar]te p[ro]p[ri]a
q[uo]d d[e] p[ar]te p[ro]p[ri]a q[uo]d d[e] p[ar]te p[ro]p[ri]a

q[uo]d d[e] p[ar]te p[ro]p[ri]a q[uo]d d[e] p[ar]te p[ro]p[ri]a
q[uo]d d[e] p[ar]te p[ro]p[ri]a q[uo]d d[e] p[ar]te p[ro]p[ri]a

q[uo]d d[e] p[ar]te p[ro]p[ri]a q[uo]d d[e] p[ar]te p[ro]p[ri]a
q[uo]d d[e] p[ar]te p[ro]p[ri]a q[uo]d d[e] p[ar]te p[ro]p[ri]a

q[uo]d d[e] p[ar]te p[ro]p[ri]a q[uo]d d[e] p[ar]te p[ro]p[ri]a
q[uo]d d[e] p[ar]te p[ro]p[ri]a q[uo]d d[e] p[ar]te p[ro]p[ri]a

q[uo]d d[e] p[ar]te p[ro]p[ri]a q[uo]d d[e] p[ar]te p[ro]p[ri]a
q[uo]d d[e] p[ar]te p[ro]p[ri]a q[uo]d d[e] p[ar]te p[ro]p[ri]a

q[uo]d d[e] p[ar]te p[ro]p[ri]a q[uo]d d[e] p[ar]te p[ro]p[ri]a
q[uo]d d[e] p[ar]te p[ro]p[ri]a q[uo]d d[e] p[ar]te p[ro]p[ri]a

108

sen ben mal amasun b mag jing
7 mast van y funder vter zel ylen
desse ymer som pruy pdd de
muy qm o lly are de lamy ff

o vic mof ples nura mof pper
in de velt gongoppe de gij

Desse op ma dieer b pper en pma
fongoppe yre de de gij nert pma

in pper b mof jing y nort van
fongoppe de velt de lamy

Desse op ma dieer b pper en pma
fongoppe yre de de gij nert pma

in pper b mof jing y nort van
fongoppe de velt de lamy

Desse op ma dieer b pper en pma
fongoppe yre de de gij nert pma

in pper b mof jing y nort van
fongoppe de velt de lamy

Desse op ma dieer b pper en pma
fongoppe yre de de gij nert pma

in pper b mof jing y nort van
fongoppe de velt de lamy

+
Wesff van alfanor & b. f. itoz

die anij omi Melum die vromij
vromij aprilis 7

Al nos lo juy deledier de pos megru
lo ofentod de hoo gespo van alfanor
die ouerij deledier de loy jelm egru

Wesff van alfanor my na velij
gru juyt deledier de hoo gespo

enij deledier de hoo gespo
enij deledier de hoo gespo

Wesff van alfanor my na velij
gru juyt deledier de hoo gespo

enij deledier de hoo gespo
enij deledier de hoo gespo

Wesff van alfanor my na velij
gru juyt deledier de hoo gespo

enij deledier de hoo gespo
enij deledier de hoo gespo

1089
Wesff van alfanor my na velij
gru juyt deledier de hoo gespo

enij deledier de hoo gespo
enij deledier de hoo gespo

Wesff van alfanor my na velij
gru juyt deledier de hoo gespo

1090

Handwritten text in a cursive script, likely a historical document or manuscript. The text is written in dark ink on aged, slightly yellowed paper. It consists of approximately 20 lines of text, though many are difficult to decipher due to the cursive style and fading. The text appears to be a list or a series of entries, possibly related to a collection or inventory.

1090

4

Handwritten notes in the top left corner, possibly including a date or reference number.

Main body of handwritten text, appearing to be a dense list or account of items, possibly in a historical or scientific context.

Vertical handwritten notes on the left margin, providing additional details or corrections.

No. 91

[Faint, mostly illegible handwritten text in a cursive script, likely a historical document or manuscript.]

10931

[The page contains dense, handwritten text in a cursive script, likely a historical document or manuscript. The text is mostly illegible due to fading and the angle of the page.]

1095

Handwritten text at the top of the page, including a large initial 'H' and several lines of cursive script.

Main body of handwritten text, consisting of approximately 15-20 lines of dense cursive script.

1096

Final section of handwritten text at the bottom of the page, possibly a signature or a concluding statement.

Handwritten text in a cursive script, likely a historical document or manuscript. The text is dense and spans most of the page. At the top left, there is a small note: "p. 109". The main body of text is written in a dark ink on aged paper. The script is highly stylized and difficult to decipher. At the bottom left, the number "109" is written again, possibly indicating the page number. The text appears to be a continuous narrative or record.

+ *[Faint handwritten text]*

[Dense, mostly illegible handwritten text in a cursive script, covering the upper two-thirds of the page.]

1103

[Handwritten text starting from the number 1103, continuing down the page.]

[The page contains dense, illegible handwritten text in a cursive script, likely a historical document or manuscript.]

1105

[The page contains approximately 35 lines of dense, handwritten text in a cursive script. The ink is dark and the handwriting is highly stylized and somewhat illegible due to the cursive nature and some fading. The text appears to be a continuous passage, possibly a letter or a manuscript entry. The lines are closely spaced and fill most of the page area.]

... ..
... ..
... ..

... ..
... ..
... ..

... ..
... ..
... ..

... ..
... ..
... ..

... ..
... ..
... ..

... ..
... ..
... ..

... ..
... ..
... ..

... ..
... ..
... ..

... ..
... ..
... ..

11

Handwritten text at the top of the page, possibly a title or header, including the number 74.

Main body of dense handwritten text, likely a letter or manuscript, written in a cursive script.

1113

Concordia ...
...

[The following text is extremely dense and illegible due to extreme cursive handwriting and fading. It appears to be a continuous block of text.]

111

no fuerit...
+ ...

...
...
...

...
...
...

...
...
...

...
...
...

...
...
...

...
...
...

...
...
...

...
...
...

...
...
...

...
...
...

...
...
...

...
...
...

...
...
...

#

1445

Abouventu & ...

Anno domini ...

Main body of handwritten text in a cursive script, covering the majority of the page.

Handwritten text at the top of the page, possibly a title or header, written in a cursive script.

Main body of handwritten text, consisting of approximately 25 lines of cursive script. The text is dense and difficult to decipher due to the style and fading.

Small handwritten mark or signature on the right margin.



[The page contains approximately 25 lines of handwritten text in a cursive script, which is largely illegible due to fading and blurring. The text appears to be a continuous paragraph or list of entries.]

Handwritten text in a cursive script, likely a historical document or letter. The text is written in dark ink on aged, slightly stained paper. The handwriting is dense and fills most of the page. The text is oriented vertically on the page, reading from top to bottom. The script is highly stylized and characteristic of the 17th or 18th century. The paper shows signs of wear, including some discoloration and faint smudges. The overall appearance is that of an old, well-used manuscript.

Handwritten mark or signature at the bottom right corner of the page.

[The page contains approximately 25 lines of handwritten text in a cursive script, which is largely illegible due to fading and blurring. The text appears to be a continuous paragraph or a list of entries.]

1132

Quarta madellera del mazen Joseph
panolsamora non in sub do bla
de losy delany - L. Vmij

Lmij XL d. Lvmij.

1133

Handwritten text at the top of the page, possibly a title or header, written in a cursive script. The text is partially obscured by a large, dark, circular scribble or stamp.

Handwritten text in the middle of the page, possibly a date or a specific reference, written in a cursive script.

deus almenus esset ad me per in sona de legitima
vix en fessom per celedor et respofamany
de cony de d'ramos f' quom. de f' r' e' e' quare
h' p' d'ona @ et ubi p' p' leny p' d'or d'ort in v' d'or
p' r' o' que p' m' i' p' a' e' d' e' f' p' e' t' e' d' e' z' d' r' o' m' e' n' o' r' a' u' e' r'
p' o' l' e' n' t' i' s' @ f' o' l' i' a' r' l' o' p' l' e' t' o' a' i' p' i' l' o' s' q' u' e' e' l' d' i'
m' u' d' o' r' p' r' i' m' o' b' l' a' f' e' n' o' r' d' e' r' y' d' e' b' e' n' i' t' i' m' p' o'
c' o' m' o' b' o' l' r' e' s' p' o' n' e' t' e' d' e' a' n' i' a' n' i' s' f' e' p' e' r' a'
p' o' r' t' a' r' e' n' l' o' s' q' u' i' d' e' p' l' e' t' o' p' a' n' i' s' d' e' s' p' e' n' d' e' e' t' o' t' l' o'
n' e' c' e' s' s' a' r' i' e' s' t' e' t' a' m' p' h' o' n' e' s' i' g' t' o' q' u' e' l' d' i' o' m' i' s'
d' e' i' m' o' n' s' t' r' a' r' e' h' a' b' e' r' e' d' e' s' s' e' p' e' r' e' n' d' e' d' e' z' y' b' e' n' e' f'
d' e' i' t' o' l' e' n' t' i' a' @ d' r' e' s' q' u' o' s' f' e' n' s' h' a' r' e' t' o' p' n' e' g' o' n'
e' p' l' e' t' o' d' e' d' i' t' o' m' u' s' e' l' o' s' q' u' e' f' u' i' t' e' s' p' i' s' p' o' s' i' t' o'
i' n' s' t' o' p' r' o' n' o' i' e' n' t' i' a' e' s' s' e' r' e' l' i' d' o' m' e' s' t' e' n' a' n' d' e' d' e'
d' e' q' u' i' t' u' o' d' o' s' e' n' f' a' s' o' n' e' r' e' q' u' e' d' o' s' e' s' t'
q' u' a' n' d' o' d' e' q' u' i' t' e' b' l' e' m' i' a' p' d' o' n' o' d' e' b' a' s' t' i' a' n' e'
p' o' e' r' e' d' i' t' u' s' m' u' s' m' u' d' o' r' p' a' q' u' e' r' e' f' o' r' m' a' n' y'
d' u' r' a' n' t' l' o' s' l' e' t' o' d' e' d' i' a' o' r' i' a' p' m' i' s' i' o' n' a' r' e' p' t' e'
d' e' p' m' a' r' i' n' o' s' t' e' a' l' o' r' e' s' p' r' o' m' u' d' o' r' i' s' d' e' l' l' i' d' i'
h' o' r' a' d' o' e' n' d' i' t' n' o' m' s' e' n' s' i' t' u' s' p' e' f' a' r' i' d' e' p' m' u' s'
p' e' n' d' i' t' u' s' l' o' s' f' a' l' a' r' i' s' d' u' r' a' n' t' d' e' s' e' n' t' f' o' n' s' t' a' n' y'
p' o' p' u' l' a' r' e' s' t' i' s' e' s' p' i' s' s' u' b' r' o' g' n' a' t' o' e' s' s' e' r' e' l' i'
v' a' n' d' i' s' e' n' s' i' m' p' l' e' t' o' s' p' l' e' t' o' h' a' m' d' a' s' e' n' f' a'
c' o' m' p' l' e' t' o' s' e' s' s' e' d' e' l' e' n' a' n' d' e' p' o' r' t' o' r' f' o' n' a' s' t' o' n' d' o'
m' u' s' f' e' r' o' n' e' e' n' s' i' t' u' s' p' a' r' a' m' e' n' i' a' i' p' i' s' o' m' e' n' l' o'
v' e' y' p' e' r' u' d' e' l' e' p' a' r' a' n' i' e' t' m' a' d' o' n' a' m' e'
p' r' e' s' e' n' t' e' n' l' e' t' i' s' p' a' d' e' r' e' t' e' l' r' e' s' q' u' o' s' f' e' n' d'
v' o' s' d' e' r' e' f' e' n' s' o' n' e' n' s' i' t' u' s' f' e' l' i' c' i' t' a' s' t' r' a' n' y' d' e' r' e' t'
e' s' t' e' s' t'

q' u' o' m' o' d' o' s' f' o' r' e' n' s' i' t' u' s' p' e' r' l' e' n' e' s' o' f' e' s'
d' e' s' p' o' n' e' s' l' e' n' s' f' e' p' h' a' y' o' p' o' m' y' r' e' @
n' i' h' o' l' a' n' m' u' s' h' a' b' e' r' e' d' e' l' a' b' l' a' d' e' o' l' o' y'
v' e' s' p' o' e' s' o' b' i' s'

[The text in this block is extremely faint and illegible due to the quality of the scan and the age of the document. It appears to be a dense block of handwritten text, possibly in a historical or scientific context.]

[This block contains faint, illegible text, likely bleed-through from the reverse side of the page or very light handwriting. Some words are barely discernible.]



1139
V. 20

Handwritten title or header in a cursive script, possibly including a cross symbol.

Handwritten text in a cursive script, appearing to be a list or a series of entries.

Main body of handwritten text in a cursive script, consisting of multiple lines of entries.

1139

Continuation of handwritten text in a cursive script, including a small cross symbol at the bottom left.

Je lein mo lo S. Simon

Deus in excelsis deus
in terra pax hominibus
bonae voluntatis

Deus in excelsis deus
in terra pax hominibus
bonae voluntatis

Deus in excelsis deus
in terra pax hominibus
bonae voluntatis

Deus in excelsis deus
in terra pax hominibus
bonae voluntatis

Deus in excelsis deus
in terra pax hominibus
bonae voluntatis

Deus in excelsis deus
in terra pax hominibus
bonae voluntatis

Deus in excelsis deus
in terra pax hominibus
bonae voluntatis

ffs *unprim de ma... de la...*

Die... de... de... de...

de... de... de...

[Faint, mostly illegible handwritten text covering the majority of the page]

de... de... de...

[Large handwritten flourish or signature]

Handwritten text at the top of the page, possibly a title or header.

Main body of handwritten text, appearing as a dense, cursive script.

Handwritten text in the middle section, possibly a signature or a specific note.

Handwritten text below the middle section, possibly a date or a reference.

Handwritten text on the right side of the page, possibly a signature or a name.

Small handwritten text or mark on the right side of the page.

Small handwritten text or mark at the bottom right of the page.

Handwritten text at the top of the page, including the word "delecto" and "fugit".

Main body of handwritten text, appearing to be a list or series of entries, with some words like "delecto" and "fugit" repeated.

Handwritten text in the middle section, possibly a continuation of the list or entries.

Handwritten text at the bottom of the page, including the number "1148" and other illegible characters.

Handwritten text at the top of the page, possibly a title or header.

Handwritten text, second line.

Handwritten text, third line.

Handwritten text, fourth line.

Handwritten text, fifth line.

Handwritten text, sixth line.

Handwritten text, seventh line.

Handwritten text, eighth line.

Handwritten text, ninth line.

Handwritten text, tenth line.

Handwritten text, eleventh line.

Handwritten text, twelfth line.

Handwritten text, thirteenth line.

Handwritten text, fourteenth line.

Handwritten text, fifteenth line.

Handwritten text at the bottom of the page.

xij

1149

Handwritten text in a cursive script, likely a historical document or manuscript. The text is written in a dark ink on aged paper and is heavily obscured by several vertical lines drawn across the page, possibly for archival or security purposes. The script is dense and difficult to decipher due to the handwriting style and the obstructions.

Vertical text on the left margin, possibly a date or reference number, including the number '1154' at the bottom.

Handwritten text in a cursive script, possibly a list or account. The text is partially obscured by a large, dark, irregular stain in the center of the page. The visible words include "magno", "proferenda", "et", "pro", "hanc", "die", "junij", "sancti", "petri", "et", "pauli", "apostolorum", "petri", "et", "pauli", "apostolorum", "petri", "et", "pauli", "apostolorum".

Handwritten text at the top of the page, possibly a title or header, written in a cursive script.

Main body of handwritten text, consisting of several lines of dense cursive script. The text is difficult to decipher due to the style and fading.

1455

Handwritten mark or signature at the bottom left corner.

Handwritten text at the top of the page, including the word "roy" and "mudi".

Main body of handwritten text, appearing to be a list or series of entries.

five

Continuation of handwritten text, including the date "1157" and the word "decembre".

St. Francis

2170

Handwritten text at the top of the page, possibly a title or header.

Main body of handwritten text in cursive script, covering most of the page.

Small handwritten note or signature on the right margin.

[The page contains approximately 30 lines of dense, handwritten text in a cursive script, likely a historical document or manuscript. The ink is dark and the handwriting is somewhat faded and overlapping.]

1164

Handwritten text in a cursive script, likely a historical document or manuscript. The text is dense and spans most of the page, with some lines appearing to be crossed out or heavily faded. The script is characteristic of the early modern period.

Die mijn de mijn. ane qua. of. M. D. L. m.

[The majority of the page is filled with extremely dense, overlapping, and illegible handwritten text in a cursive script.]

White

Die mijn de mijn. ane qua. of. M. D. L. m.
... van zehone equale. l. p. f. g. n. i. s.

page amy bozigni

die miji domy moie
mo kochomy py
Hogibon wos
Hogibon

Ths

Quantum laqueantia dicitur moit magis en
cogit Joan de hano moiano Justitia de la
pulsant vira de alay eo sero honor conper
separalenti consantit co p m ero fante
qbert camada de vil gorment de la
dura tudor y miador donat y pignat ala
glora y bibe de luy co p m fide de m de la
man y vira de alay de m p pofa que rom
codie lmb loqiz minor qia de m de pognat
fres y vira de pignat m lmb de mal
de pignat de m lmb de m de pignat
de m lmb de m de pignat que de m de pignat
de m lmb de m de pignat que de m de pignat
de m lmb de m de pignat que de m de pignat
de m lmb de m de pignat que de m de pignat
de m lmb de m de pignat que de m de pignat

~~Handwritten text, mostly illegible due to extreme blurring and bleed-through from the reverse side of the page.~~

[The text on this page is extremely faint and illegible due to the quality of the scan and the cursive handwriting.]

Faint, illegible handwritten text, likely bleed-through from the reverse side of the page.

the

Admissio[n]e[m] p[ro]p[ri]etaria[m]
p[ro]p[ri]etaria[m] p[ro]p[ri]etaria[m]
p[ro]p[ri]etaria[m] p[ro]p[ri]etaria[m]

Faint, illegible handwritten text, likely bleed-through from the reverse side of the page.

[Faint, illegible handwritten text, possibly bleed-through from the reverse side of the page.]

1168

Handwritten text in a cursive script, likely a historical document or manuscript. The text is densely packed and spans the entire page, with some lines appearing to be crossed out or heavily faded. The script is characteristic of the late 16th or early 17th century. The text is written in a dark ink on aged, slightly yellowed paper. The handwriting is very fluid and connected, with many loops and flourishes. The overall appearance is that of a well-used, possibly official, document.

[The page contains dense, handwritten text in a cursive script, likely a historical document or manuscript. The text is written in dark ink on aged, slightly yellowed paper. The handwriting is highly stylized and difficult to decipher. The text is organized into several paragraphs, with some lines appearing to be headings or section markers. The overall appearance is that of a well-used, historical record.]

[Extremely dense and illegible handwritten text in a cursive script, covering most of the page.]

[A vertical strip of handwritten text on the left side of the page, partially overlapping the main body of text.]

1172

1170

[A few lines of handwritten text at the bottom of the page, including the word "viam" and "in" visible.]

[Faint, illegible handwritten text in a cursive script, likely a historical document or letter.]

1174

[The majority of this page is obscured by a dense, dark ink smudge or bleed-through from the reverse side, rendering the text illegible.]

1145

Die mijn xv y mēſic anebrin ane queſt
Xxlvij ſanone pmiſe ſerſin ppiſe

[Extremely dense and illegible handwritten text in a cursive script, likely a historical document or manuscript.]

1176

[Faint handwritten text at the bottom of the page, possibly a signature or date.]

[The page contains approximately 25 lines of dense, handwritten text in a cursive script, likely a historical document or manuscript. The ink is dark and the handwriting is somewhat faded and overlapping, making it difficult to decipher. The text appears to be a continuous narrative or record.]

Handwritten text at the top of the page, possibly a title or header.

Handwritten text in the upper section of the page.

Main body of handwritten text, appearing to be a letter or a long entry.

A184

Handwritten text at the top of the page, including a large initial 'H' and several lines of cursive script.

Die mijn my July 1820 my ...
Handwritten text in the middle section of the page, starting with a date and a name.

Handwritten text in the bottom section of the page, continuing the cursive script.

antony ruyter & miquel

[The main body of the page contains several lines of extremely dense, cursive handwriting, which is largely illegible due to the tight spacing and slant of the script.]

#5

1185

1

Handwritten text at the top of the page, possibly a title or header, written in a cursive script.

Main body of handwritten text in a dense, cursive script, covering most of the page. The text is difficult to decipher due to the style and some fading.

Handwritten text at the bottom of the page, appearing to be a concluding sentence or a signature.

[The page contains dense, highly stylized handwritten text in a cursive script, likely a historical document or manuscript. The text is mostly illegible due to the extreme ink density and overlapping strokes.]

[The page contains approximately 30 lines of extremely dense, cursive handwriting. The ink is dark and the script is highly stylized, making the individual words difficult to decipher. The text appears to be a continuous block of writing, possibly a letter or a manuscript page.]

[Faint, mostly illegible handwritten text in a cursive script, possibly a list or account.]

[A line of handwritten text, possibly a signature or a specific entry.]

[A block of handwritten text, appearing to be a list of names and titles, including 'Almoxarife', 'Alcaide', and 'Alcaide de la Plaza'.]

[Illegible handwritten text in a cursive script, likely a historical document or letter.]

1493

[Illegible handwritten text, possibly a signature or a specific section of the document.]

Handwritten text in a cursive script, likely a historical document or letter. The ink is dark and the paper shows signs of age and wear.

Continuation of the handwritten text, showing dense cursive script with some larger, more prominent letters.

Further section of the handwritten text, appearing as a continuous flow of cursive characters.

Another section of the handwritten text, maintaining the same cursive style.

The final section of the handwritten text on the page, ending with a large, stylized initial or signature.

1194

[The page contains dense, handwritten text in a cursive script, which is largely illegible due to fading and bleed-through from the reverse side. The text appears to be organized into several paragraphs.]

Handwritten text in a cursive script, likely a historical document or manuscript. The text is dense and spans most of the page, with some lines appearing to be crossed out or heavily faded. The script is characteristic of the late 17th or early 18th century.

#5

ab oves de doronfal' ex asber su
delmas en bms' mrales' mto da de la
puz bto que de pensio e e em qm
En propretari' mrales' moneda
uols de bto d'altre de bener mof
fancses de puz mols p' que exen
pensio de bnd' mrales' mto da de la
En propretari' mrales' mto da de la
moneda' per p'cu de omne d'as
mof e p' bto de fegon bte mof p' ob
carta p' bto de bnd' rebuda p' celo
d' fegon en p' bto p' ab amota noy p'
d' puz y bnd' fegon d' ames d' d' p' bto
any d' bnd' fegon d' d' p' bto de la
fegon p' bto d' d' p' bto de la
fegon p' bto de la fegon p' bto de la
d' d' mrales de mrales p' ob bte p' puz
aldis mrales fegon de puz mols
fegon pensio y p' bto de bnd' d' p'
d' p' bto de la fegon p' bto de la
d' d' mrales de mrales p' ob bte p' puz
fegon omne p' bte de mrales fegon d' p'
aldis mrales mrales fegon de la
d' p' bto de la fegon p' bto de la
vend' fegon de la fegon d' p' bto
d' d' mrales de mrales p' ob bte p' puz
d' d' mrales de mrales p' ob bte p' puz

for american pram leir vij danjo vij
museo pram; no sebe leir vij
Egri Josa / y raga,

Comiguel vier plan y uedje
Cody

[Faint, illegible handwritten text, likely bleed-through from the reverse side of the page.]

Handwritten text in a cursive script, likely a historical document or manuscript. The text is dense and covers most of the page, with some lines appearing to be crossed out or heavily scribbled over. The script is characteristic of the late 15th or early 16th century.

die gung...
fand...
gung...
gung...

gung...
gung...
gung...
gung...

gung...
gung...
gung...
gung...

gung...
gung...
gung...
gung...

gung...
gung...
gung...
gung...

Handwritten mark or signature at the bottom left corner.

1212

Handwritten text in a cursive script, likely a historical document or manuscript. The text is dense and spans most of the page, with some lines appearing to be crossed out or heavily faded. The script is characteristic of the 16th or 17th century.

Handwritten text at the bottom of the page, possibly a signature or a concluding section. It includes a large, stylized flourish or initial that begins a line of text. The handwriting is consistent with the rest of the page.

Handwritten text in a cursive script, likely a letter or document. The text is dense and difficult to decipher due to the handwriting style and fading. Some legible words include "Lindor", "vint", "mab", "vo", "a", "le", "ab", "off", "mij".

Handwritten text in a cursive script, continuing from the previous block. The text is dense and difficult to decipher due to the handwriting style and fading. Some legible words include "vint", "mab", "vo", "a", "le", "ab", "off", "mij".

[The page contains approximately 25 lines of dense, handwritten text in a cursive script, likely a historical document or manuscript. The ink is dark and the paper shows signs of age and wear.]

Handwritten text in a cursive script, likely a historical document or letter.

Handwritten text in a cursive script, likely a historical document or letter.

Handwritten text in a cursive script, likely a historical document or letter.

Handwritten text in a cursive script, likely a historical document or letter.

Handwritten text in a cursive script, likely a historical document or letter.

Handwritten text in a cursive script, likely a historical document or letter.

Handwritten text in a cursive script, likely a historical document or letter.

Handwritten text in a cursive script, likely a historical document or letter.

Handwritten text in a cursive script, likely a historical document or letter.

Handwritten text in a cursive script, likely a historical document or letter. The text is dense and spans most of the page.

Handwritten text in a cursive script, continuing the document. The ink is dark and the script is consistent with the previous section.

Handwritten text in a cursive script, continuing the document. The text appears to be a formal or official communication.

Handwritten text in a cursive script, continuing the document. The text is less dense than the previous sections.

Handwritten text in a cursive script, located in the bottom left corner of the page.

Handwritten text at the top of the page, possibly a title or header, including the word "ing" at the end.

First main paragraph of handwritten text, containing several lines of cursive script.

Second main paragraph of handwritten text, continuing the cursive script.

Third main paragraph of handwritten text, continuing the cursive script.

Fourth main paragraph of handwritten text, continuing the cursive script.

Handwritten text in a cursive script, likely a historical document or letter. The text is dense and difficult to decipher due to the style and fading.

Handwritten text in a cursive script, continuing from the previous section. It appears to be a formal or legal document.

Handwritten text in a cursive script, possibly a concluding section or a signature block.

Handwritten text in a cursive script, including some legible words like 'viam' and 'manu'.

Homage of the King of France
The year, in the month of June
1229

Alors le Roy de France se leva
Et se fit accompagner de ses
seigneurs et de ses barons
Et se vint assis sur un
trône d'or et de soie
Et se fit entourer de ses
chevaliers et de ses
seigneurs et de ses barons
Et se fit lire par un
premier ministre
une chartre de franchises
qui fut faite par son
pere le Roi Louis VIII
le premier
Et se fit donner par
le Roy a ses barons
et a ses seigneurs
et a ses chevaliers
et a ses sergents
et a ses autres
vassaux
une chartre de franchises
qui fut faite par son
pere le Roi Louis VIII
le premier
Et se fit donner par
le Roy a ses barons
et a ses seigneurs
et a ses chevaliers
et a ses sergents
et a ses autres
vassaux

Fragment of text from the adjacent page, including characters like 'K', 'P', 'C', 'M', 'S', 'V', 'A', 'I'.

Fragment of text from the adjacent page, including a decorative flourish.

1231

1232

+

Qmva mo delatres del mof
Jemp left van al fannar Jany
del vilo de atoy del am Jk
glvini

L

Knixholvini

+

Handwritten text in a cursive script, possibly a list or account, including phrases like "Census in Bel..." and "The year...".

Handwritten text in a cursive script, possibly a signature or a specific entry.

1234

+

Janus domini 8. L. in p. se an
Janus

Janus in p. se an
Janus in p. se an
Janus in p. se an

Janus in p. se an
Janus in p. se an
Janus in p. se an

Janus in p. se an
Janus in p. se an
Janus in p. se an

Janus in p. se an
Janus in p. se an
Janus in p. se an

Janus in p. se an
Janus in p. se an
Janus in p. se an

Janus in p. se an
Janus in p. se an
Janus in p. se an

1235

~~Handwritten text at the top of the page, partially obscured by a large flourish.~~

Die ~~Handwritten text~~
de ~~Handwritten text~~
res ~~Handwritten text~~

~~Handwritten text in a cursive script, appearing to be a legal or administrative document. The text is dense and difficult to decipher due to the cursive style and some fading.~~

de bonis mobilibus se vendit & remouent
sunt alii vendite alienare & propor
tar & loci & contrabere & encastra
rebre & robur tota & quod ferat
denes quer de p. o. & denis olo
da a meho. quomodo amgeto no
liser amq. & feruar canisles
apocnet canelionis & ferat quod ferat
bluerades & iouitales delidit ad
mumfratio de tussella & iouitales
& semblant Indos & iouitales de aof
tinnat manat effedi & p. o. o.
Instrument de uera ne refaxi iust
lure. Stillum Comayre & com
plementum in uera & iouitales

+

(over die?)

fad nunc car bere p l i a e e
 r p e n g n o t t o b e t a n e a p t i o n e r
 v i g n e l p l i n j e m a r . l a i v o u
 d e a n t r e u e l e i n t e r d u m i g n e
 v i g n e l p l i n j e m a r d e m i g n e
 u o y p r e m p e a d t a d p b e
 f i t l a i n o r e g r o p t t o f t u r
 p d y o t l e m u l t i p l i c i t a t e

l u d i n o d i e n o t t o b e t a n e a p t i o n e r
 f a d p e n o t t o b e t a n e a p t i o n e r

C a n f i n c a p t o e y e d o
 m a d e

[Faint, illegible handwritten text covering the majority of the page]

1210

Handwritten text in a cursive script, likely a historical document or letter. The text is dense and spans most of the page, with some lines appearing to be crossed out or heavily faded. The script is characteristic of the early modern period.

